

## DESCRIPTION OF PARTS

Wall and ceiling-mounted luminaire LED 29W  
Body colour: white  
Dimension: Ø 350 x 70 mm

## TECHNICAL DATA

LED luminaire with sensor and an integrated converter, 220-240V  
50/60 Hz 29W

WIL-29NW1S = 4000k  
WIL-29WW1S = 3000K  
non-dimmable  
protection class II

## LAMP

LED

## SAFETY



READ THE INSTRUCTIONS BEFORE USING THIS PRODUCT.  
KEEP THE SAFETY AND OPERATING INSTRUCTIONS FOR  
FUTURE USE.

## SAFETY INFORMATION

IP44



- The light is only suitable for use indoors or in roofed outdoor areas.
- IP20 and suitable for use in interiors, in dry, enclosed rooms.
- The light is not suitable for attaching on uneven surface. The light may otherwise fall. This can result in product damage and / or injuries.
- Don't install under power.
- Follow the instruction manual for installation.
- Installation only by qualified and authorised persons.
- Do not use the product when it has been damaged (defective covers) or there are operational faults such as flickering, smoking, steaming, crackling noises or the smell of smoke.
- A damaged or defective product must be changed or repaired by the manufacturer, a service person or a comparable qualified person.
- Installation only under observance of the valid guidelines specific to application and country among others VDE 0.100.
- Never open one of the electrical operating agents or plug any objects into them. Such procedures signify a danger to life through electrical shock.
- Absolutely avoid contact between the product and water or other liquids. For reasons of electrical safety, the light may not be placed in contact with water or other liquids or submerged in water.
- The product may not be changed or modified.

## MAINTENANCE AND CLEANING



- The LED light agent cannot be replaced.
- Do not use solvents, such as benzene and similar agents. The light would be damaged thereby.
- Only use a dry, lint-free cloth for cleaning the product.

## DISPOSAL

The packaging consists of environmentally friendly materials.  
Dispose of them in the local recycling containers.



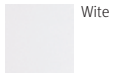
Do not dispose of this product in the household garbage when it has reached the end of its lifecycle, but rather take it to a disposal center. Your local officials will provide you with information about collection offices and their business hours.

# WIL

Wall and ceiling-mounted luminaire with sensor

WIL-29NW1S  
WIL-29WW1S

**ALS**  
ARCHITEKTONISCHE  
LICHT  
SYSTEME



IP44 CE

## INTENDED USAGE

This product will only serve the purpose of illumination.

The light is only suitable for use indoors or in roofed outdoor areas.

## SCOPE OF DELIVERY

- 1 x LED luminaire
- 1 x set of instructions for assembly, operation and safety
- 1 x mounting kit

address | contact

A.L.S. GmbH & Co. KG  
Mastorter Str. 29 | 88069 Tettnang (Germany)  
Tel.: +49 (0) 75 42 93 44-0 | Fax.: +49 (0) 75 42 93 44-30  
E-Mail: info@als.de | Web: www.als.de

Version: 2018-04-19

EN



Protection class II



Notification of Risks



CE label



Safety Instructions



The light is only suitable for use indoors or in roofed outdoor areas.



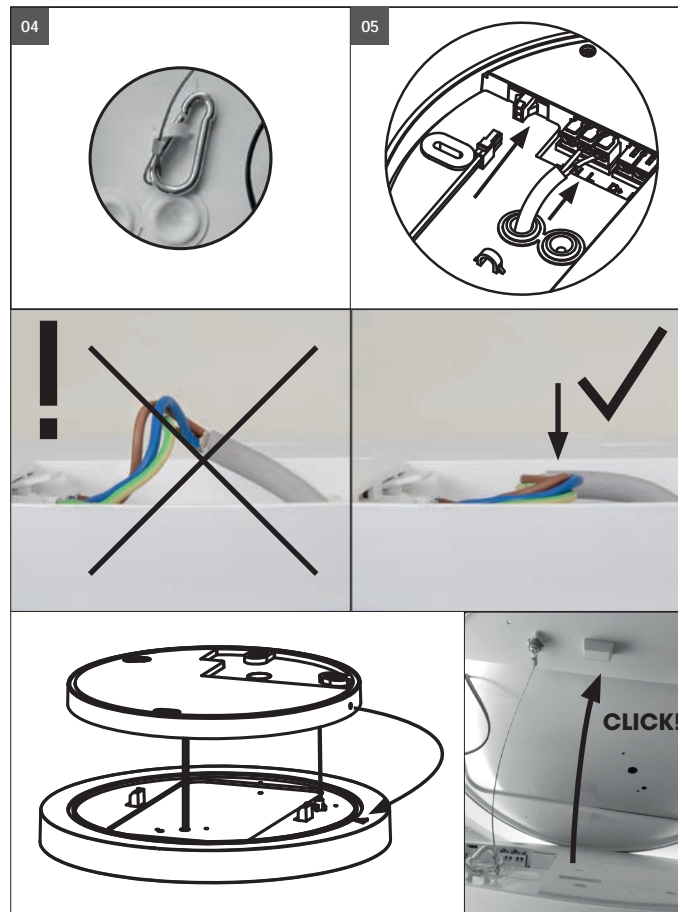
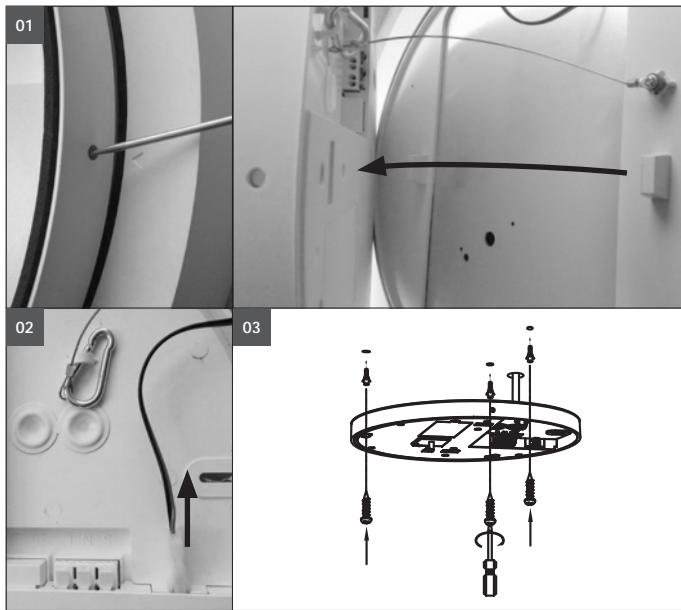
Cleaning Instructions



The product may not be disposed of in the household garbage.



TÜV Rheinland certified



Montagehinweise



**Turn Off power supply before starting any installation!**  
**Do not connect the device under power!**

Carefully remove the LED luminaire from its packaging.

**Picture 01:** Use a screwdriver to push in the side lock and remove the mounting base of the light.

**Picture 02:** Open plug lock and disconnect cable (red / black). Disconnect the safety rope from the carabiner hook.

**Picture 03: Check for underlying installations before drilling!**  
 Transfer the mounting holes on stable ceiling/wall with mounting bracket. Mounting the bracket with the enclosed accessory. Note that the mounting bracket is not bent when tightening the screws!

**Picture 04:** Hook the safety rope back into the carabiner hook.

**Picture 05:** Attach the power supply cable to the primary 230V terminal in accordance with the electrical codes. Reconnect the plug with cable (red / black). Place the front part of the luminaire on the mounted assembly floor. Make sure the locking mechanism engages properly.  
**Carefully check the solidity of the LED luminaire.** Turn on the power.

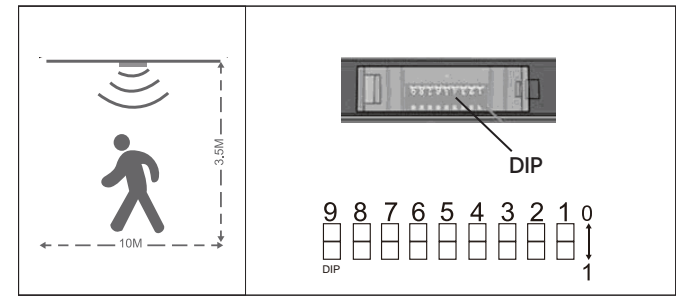
HF detection sensor



LED light with an integrated HF sensor with corridor function. For settings use the chart.

**Default setting:**

Light sensibility: 10 lux  
 Detecting sensitivity: 4,5 - 5,5 m  
 max. sensibility: 4,5 m (H) x 5,5 m (L)

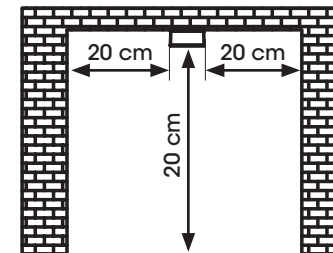


Detecting distance	S1		S2		Time delay		S3		S4		Light sensibility		S5		S6	
	OFF	ON	OFF	ON	10 sec.	1 min.	3 min.	OFF	ON	OFF	ON	24 h.	10 lux	30 lux	OFF	ON
1,0 - 2,0 meters	OFF	OFF	OFF	OFF	10 sec.	OFF	OFF	OFF	OFF	OFF	OFF	24 h.	OFF	OFF	OFF	OFF
2,5 - 3,5 meters	OFF	ON	ON	ON	1 min.	OFF	ON	ON	ON	ON	ON	10 lux	OFF	ON	ON	ON
4,5 - 5,5 meters	ON	ON	ON	ON	3 min.	ON	OFF	OFF	OFF	OFF	OFF	30 lux	ON	OFF	OFF	OFF

Timer on dimmed light	S7		S8		Dimmed light		S9	
	24 h.	15 sec.	30 min.	OFF	ON	10%	30%	OFF
24 h.	OFF	OFF	OFF	OFF	10%	OFF	OFF	OFF
15 sec.	OFF	ON	ON	ON	30%	ON	ON	ON
30 min.	ON	OFF	OFF	OFF				



The minimum mounting distance of 20 cm from wall to wall and ceiling to floor must be observed.



**With the Sensor version.** structural material properties (metallic surfaces) can impair the sensor's triggering properties. If the detection sensitivity is set too high, the lamp may be triggered by movement of persons located in the neighboring room.

Fixing materials

- Allen key
- dowel
- screws