

DESCRIPTION OF PARTS

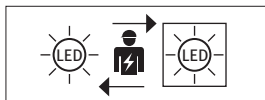
Recessed ceiling LED downlight 36° with PMMA reflector
 Dimensions: **UDL-6** = L76xB45xH51 mm, **UDL-13** = L147xB45xH51 mm, **UDL-25** = L280xB45xH51 mm, Mounting depth: 58 mm
 Ceiling cut-out: **UDL-6** = L68xB37 mm, **UDL-13** = L149xB37 mm, **UDL-25** = L272xB37 mm / Housing: xx1-2 = black-matt, frame white, Housing: xx2 = black-matt, frame black

TECHNICAL DATA

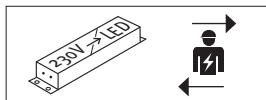
Linear LED downlight 6W with external LED converter 220-240V 50/60Hz, DC 6V -700mA | UDL-6 = non-dimmable | UDL-13 + UDL-25 = TRIAC-dimmable
 Protection class II | CRI 90 | IP40

Type	Watt	CCT	Light source:	This luminaire contains one light source of energy efficiency class	LED, Number/ grouping of light sources:
UDL-6	6	4000K	A.L.S. GmbH - EP830790-1-6NW1	E	2
		3000K	A.L.S. GmbH - EP830790-1-6WW1	F	2
		2700K	A.L.S. GmbH - EP830790-1-6SW1	G	2
UDL-13	13	4000K	A.L.S. GmbH - EP830790-1-13NW1	E	5
		3000K	A.L.S. GmbH - EP830790-1-13WW1	F	5
		2700K	A.L.S. GmbH - EP830790-1-13SW1	F	5
UDL-25	25	4000K	A.L.S. GmbH - EP830790-1-25NW1	E	10
		3000K	A.L.S. GmbH - EP830790-1-25WW1	F	10
		2700K	A.L.S. GmbH - EP830790-1-25SW1	F	10

The product consists of two components. Luminaire with light source and internal power supply.



The light source is only exchangeable by a professional.



The LED driver is only exchangeable by a professional.



Protection class II



Notification of Risks



The product is only for use in interiors.



CE label



Safety instructions



It is not allowed to cover luminaires with heat-insulating cover sheet or similar materials!



LED luminaire gets very warm during operation. Be careful when touching the body.



UDL-6 Non-dimmable



UDL-13 + UDL-25 TRIAC dimmable



Don't look directly into the LED! The LED is that bright that it might damage your eyes!



Installation only by qualified and authorised persons.



Cleaning instructions



The product may not be disposed of in the household garbage.

SAFETY



READ THE INSTRUCTIONS BEFORE USING THIS PRODUCT. KEEP THE SAFETY AND OPERATING INSTRUCTIONS FOR FUTURE USE.

SAFETY INFORMATION



- The light is only suitable for use indoors or in roofed outdoor areas.
- IP20 and suitable for use in interiors, in dry, enclosed rooms.
- The light is not suitable for attaching on uneven surface. The light may otherwise fall. This can result in product damage and / or injuries.

- Don't install under power.
- Follow the instruction manual for installation.
- Installation only by qualified and authorised persons.
- Do not use the product when it has been damaged (defective covers) or there are operational faults such as flickering, smoking, steaming, crackling noises or the smell of smoke.
- A damaged or defective product must be changed or repaired by the manufacturer, a service person or a comparable qualified person.
- Installation only under observance of the valid guidelines specific to application and country among others VDE 0.100.
- Never open one of the electrical operating agents or plug any objects into them. Such procedures signify a danger to life through electrical shock.
- Absolutely avoid contact between the product and water or other liquids. For reasons of electrical safety, the light may not be placed in contact with water or other liquids or submerged in water.
- The product may not be changed or modified.
- Be careful when touching the heat sink on the back, light body becomes very warm!
- Don't look directly into the LED! The LED is that bright that it might damage your eyes!

MAINTENANCE AND CLEANING



- The light source is only exchangeable by a professional.
- Do not use solvents, such as benzene and similar agents. The light would be damaged thereby.
- Only use a dry, lint-free cloth for cleaning the product.

DISPOSAL

The packaging consists of environmentally friendly materials. Dispose of them in the local recycling containers.

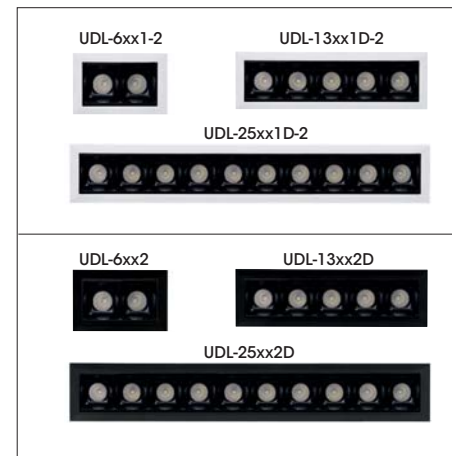


Do not dispose of this product in the household garbage when it has reached the end of its lifecycle, but rather take it to a disposal center. Your local officials will provide you with information about collection offices and their business hours.

UDL

Linear LED downlight with single reflector

UDL-6NW1-2	UDL-13NW1D-2	UDL-25NW1D-2
UDL-6NW2	UDL-13NW2D	UDL-25NW2D
UDL-6WW1-2	UDL-13WW1D-2	UDL-25WW1D-2
UDL-6WW2	UDL-13WW2D	UDL-25WW2D
UDL-6SW1-2	UDL-13SW1D-2	UDL-25SW1D-2
UDL-6SW2	UDL-13SW2D	UDL-25SW2D



INTENDED USAGE

This product will only serve the purpose of illumination.

The light is only suitable for use indoors.

SCOPE OF DELIVERY

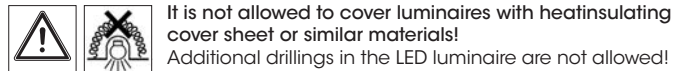
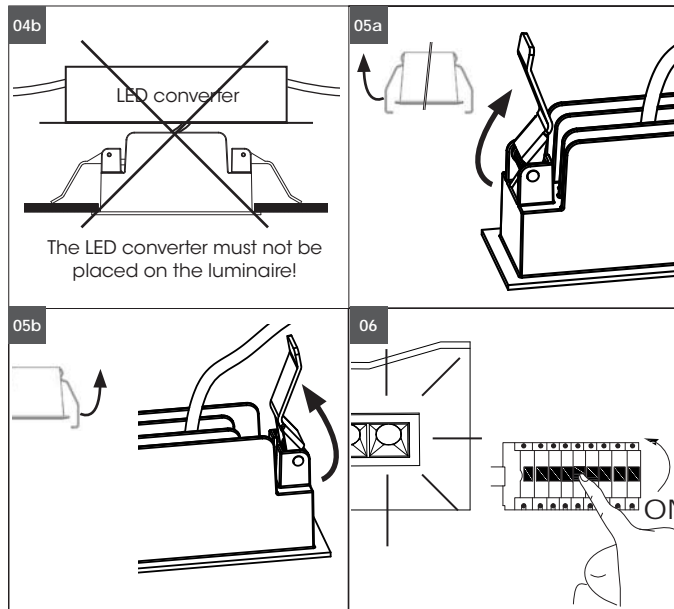
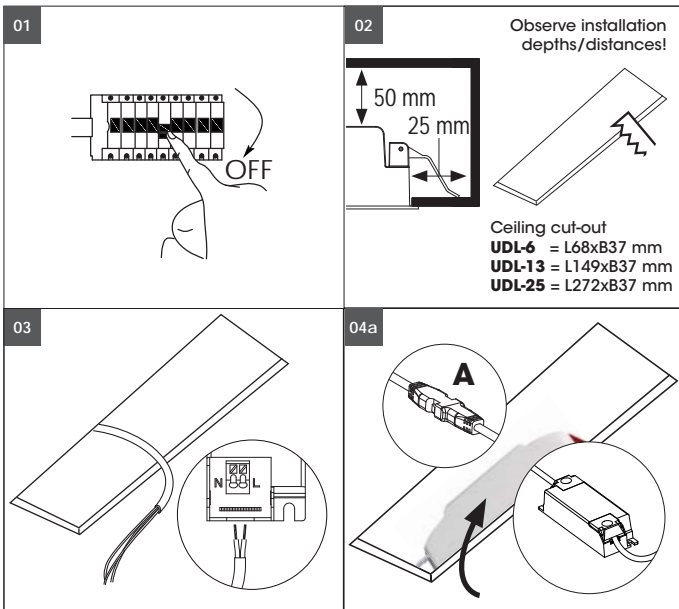
1 x LED luminaire
 1 x Converter
 1 x set of instructions for assembly, operation and safety

TECHNICAL CHANGES

Changes in the sense of technical progress can be made without prior notice.

address | contact

A.L.S. GmbH
 Mastorter Str. 29 | 88069 Tettnang (Germany)
 Tel.: +49 (0) 75 42 93 44-0 | Fax.: +49 (0) 75 42 93 44-30
 E-Mail: info@als.de | Web: www.als.de



Assembly instructions



**Turn Off power supply before starting any installation!
Do not connect the device under power!**

Carefully remove the LED luminaire from its packaging.

- 01** Turn off power supply before starting any installation.
- 02** Create a ceiling cut-out - **pay attention to lower installations! Pay attention to installation depth and distances** to the left, right and above.
- 03** Installation only under observance of the valid guidelines specific to application and country among others VDE 0.100. The luminaire can be separated from the converter by the coded plug (A) for easier installation. **Only disconnect or plug in with power turned off.** The connection can be disconnected by pressing together the securing clips on the side and pulling on the plug. The connection cable between LED luminaire and LED converter must not be extended!
- 04** Place the converter through the ceiling opening besides the ceiling cut-out into the ceiling.
- 04b** The LED converter must not be placed on the luminaire!
- 05a** Hold back first spring clip then insert downlight diagonally into the hole.
- 05b** Hold back second spring clip and push downlight into the hole. Make sure the downlight fixed tightly in ceiling.
- 06** Turn on power supply