

DESCRIPTION OF PARTS

LED ceiling/pendant/wall luminaire round, switchable from 2700K/3200K/4000K
Incl. power supply unit. Housing color: Black/golden and white.

TECHNICAL DATA

LED luminaire (220-240V 50 Hz)
Incl. driver (primary voltage: 220V/50 Hz)
Beam angle 120°
Light color switchable: 2700K/3200K/4000K
Opal PMMA Diffuser

CRI : ≥ 80
IP class: IP54
Triac dimmable
IK06

Protection class:
Pendant: Protection class I
Ceiling and wall: Protection class II

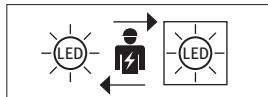
17W
UCL-18SWNW1TD
UCL-18SWNW2-4TD

Ø320xH64mm
Light source:
A.L.S. GmbH - EP830790-1-4WWSCW1 and
A.L.S. GmbH - EP830790-3-13WWSCW1
This luminaire contains **2** light sources of energy
efficiency class **C**

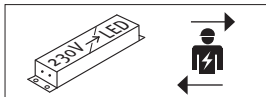
25W
UCL-25SWNW1TD
UCL-25SWNW2-4TD

Ø400xH64mm
Light source:
A.L.S. GmbH - EP830790-1-4WWSCW1 and
A.L.S. GmbH - EP830790-1-19WWSCW1
This luminaire contains **2** light sources of energy
efficiency class **C**

The product consists of two components. Luminaire with light source and external LED Driver.



The light source is only exchangeable by a professional.



The LED driver is only exchangeable by a professional.



Pendant:
Protection
class I



Ceiling/Wall
Protection
class II



Notification
of Risks



CE label



Safety
Instructions



TRIAC
dimmable



For indoor
and covered
outdoor use



The product
may not
be disposed
of in the
household
garbage.



The product
may not
be disposed
of in the
household
garbage.



Do not
attach deco
material.



Installation only
by qualified
and autho-
rised persons.



Reinigungs-
hinweis

SAFETY



READ THE INSTRUCTIONS BEFORE USING THIS PRODUCT.
KEEP THE SAFETY AND OPERATING INSTRUCTIONS FOR
FUTURE USE.

THE DESCRIBED ARTICLE IS PART OF A BUILDING INSTALLATION.
WHEN PLANNING AND INSTALLING ELECTRICAL SYSTEMS, THE
RELEVANT STANDARDS AND GUIDELINES OF THE COUNTRY IN
WHICH THE ARTICLE IS INSTALLED MUST BE OBSERVED. WE RESERVE
THE RIGHT TO MAKE TECHNICAL AND FORMAL CHANGES TO THE
PRODUCT, AS FAR AS THEY SERVE THE TECHNICAL PROGRESS.

SAFETY INFORMATION



- The luminaire is intended for indoor and covered outdoor use only.
- The luminaire is not suitable for mounting on uneven surfaces, softboard. The light may otherwise fall. This can result in product damage and / or injuries. **Check the mounting surface and adjust the mounting material to the ground.**
- Do not let children play with the packaging film. Children can get caught up in it and suffocate while playing.
- Don't install under power.
- Follow the instruction manual for installation.
- Installation only by qualified and authorised persons.
- Do not use the product when it has been damaged (defective covers) or there are operational faults such as flickering, smoking, steaming, crackling noises or the smell of smoke.
- A damaged or defective product must be changed or repaired by the manufacturer, a service person or a comparable qualified person.
- Installation only under observance of the valid guidelines specific to application and country among others VDE 0.100.
- Never open one of the electrical operating agents or plug any objects into them. Such procedures signify a danger to life through electrical shock.
- Absolutely avoid contact between the product and water or other liquids. For reasons of electrical safety, the light may not be placed in contact with water or other liquids or submerged in water.
- The product may not be changed or modified.
- Make sure that the luminair is never covered by heat insulating mats or thin materials. Make sure that the product has enough space for heat dissipation.



MAINTENANCE AND CLEANING

The light source is only exchangeable by a professional.



- Do not use solvents, such as benzene and similar agents. The light would be damaged thereby.
- Only use a dry, lint-free cloth for cleaning the product.

DISPOSAL

The packaging consists of environmentally friendly materials.
Dispose of them in the local recycling containers.



Do not dispose of this product in the household garbage when it has reached the end of its lifecycle, but rather take it to a disposal center. Your local officials will provide you with information about collection offices and their business hours.



Keep foil packaging away from small children, there is a risk of suffocation.

UCL

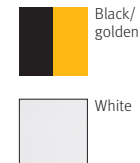
Pendant, ceiling and wall luminaire

UCL-18SWNW1TD
UCL-18SWNW2-4TD

UCL-25SWNW1TD
UCL-25SWNW2-4TD

UCL-18SWNW31TD
UCL-18SWNW32-4TD

UCL-25SWNW31TD
UCL-25SWNW32-4TD



INTENDED USAGE

This product will only serve the purpose of illumination.

The luminaire is intended for indoor and covered outdoor use only.

SCOPE OF DELIVERY

1 x LED luminaire incl. converter
1 x set of instructions for assembly, operation and safety
Included in delivery for pendant mounting:
Steel cable suspension L1500 mm incl. supply cable and canopy

TECHNICAL CHANGES

Changes in the sense of technical progress can be made without prior notice.

address | contact

A.L.S. GmbH
Mastorter Str. 31 | 88069 Tettnang (Germany)
Tel.: +49 (0) 75 42 93 44-0 | Fax.: +49 (0) 75 42 93 44-30
E-Mail: info@als.de | Web: www.als.de

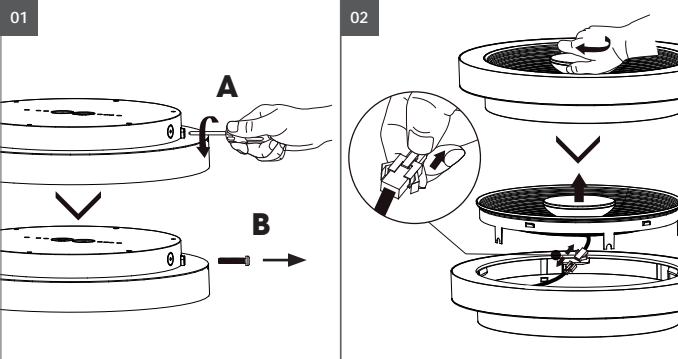
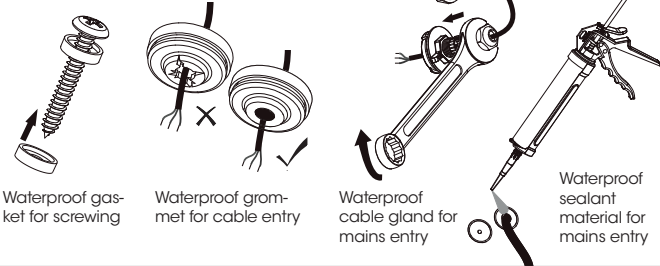
Version: 2023-11-29

EN



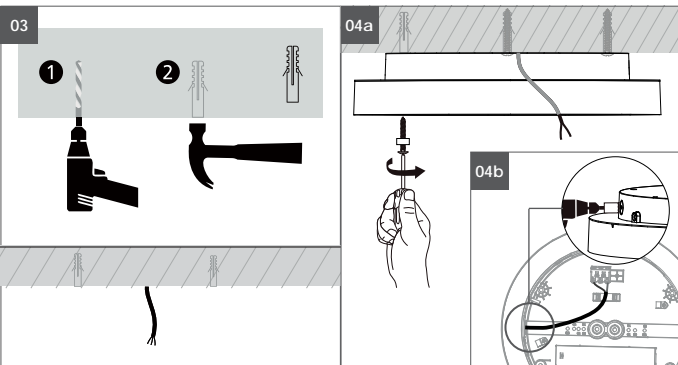
Turn off power supply before starting any installation. Do not connect the device under power.

Waterproof installation tips (if applicable)



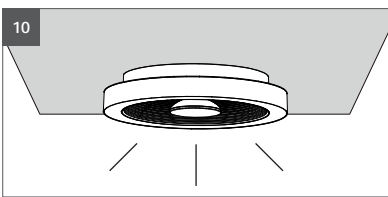
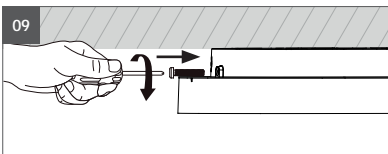
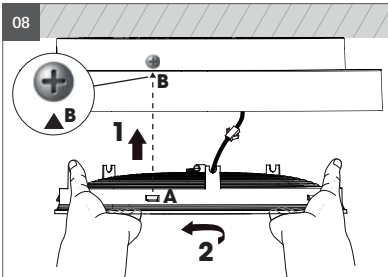
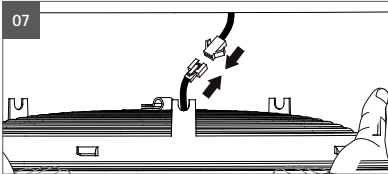
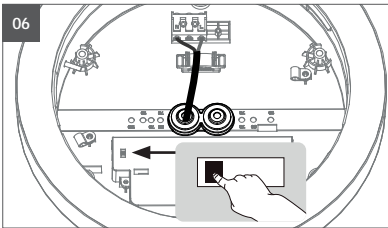
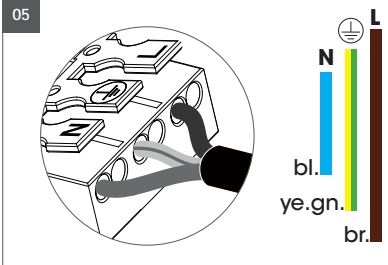
01 Remove the locking screw on the side to be able to remove the light head.

02 Remove the luminaire unit by lifting it upwards. Transfer the drill holes with the mounting housing to the ceiling/wall.



03 Drill the holes and use the dowels for secure mounting (see also mounting instructions). **Pay attention to deeper installations when drilling!**

04a Guide the connection cable through the cable membrane and fasten the mounting plate with suitable mounting material. Check that the mounting plate is firmly seated.
04b For lateral cable outlet.



Another installation / assembly / materials / types than provided in the manual sheets, release us from any electrotechnical and electrostatic responsibility.

Fixing materials: The warranty is void if the buyer or a third party repairs or modifies the luminaire.

05 Connect the cable terminals according to VDE 0100 regulations. See terminal assignment.

Without DALI connection, the terminal is 3-pole.

Connection of protective conductor is only intended as a placeholder!

06 Set light color with selector switch in the luminaire (for power, see technical data).

07 Connect the connector plugs between the mounting housing and the luminaire body (230V supply).

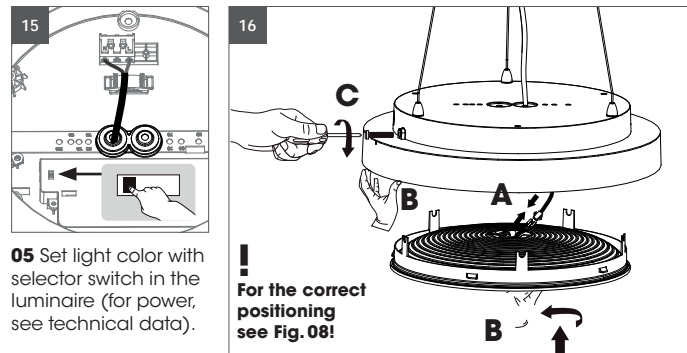
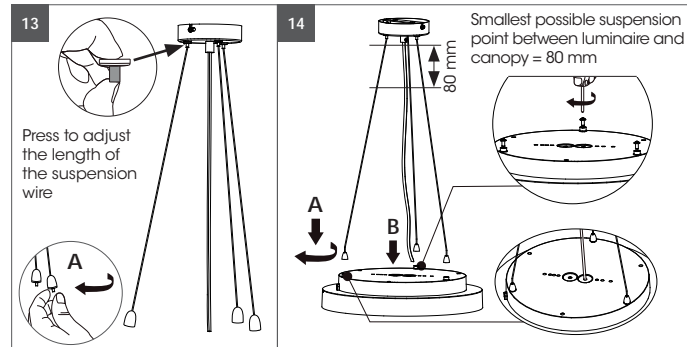
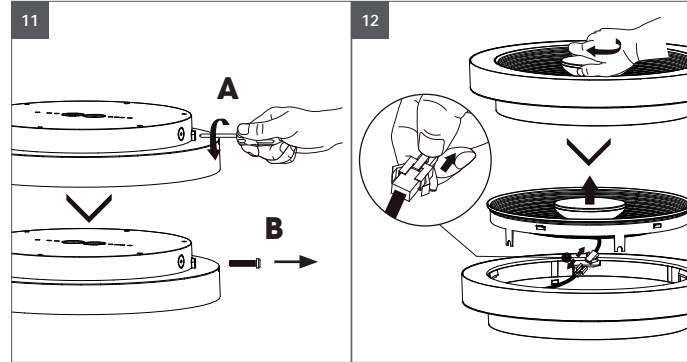
08 To close the light fixture, insert the light fixture body in the correct position (snap-in tab **A** over marking **B**) into the guide openings on the mounting housing. Then turn the lamp counter-clockwise to the fixed position. Check the tight fit of the light head in the mounting housing.

10 Screw in the side locking screw again to secure the luminaire body to the mounting housing.

11 Switch on the fuses and residual current circuit breakers again and check the function.

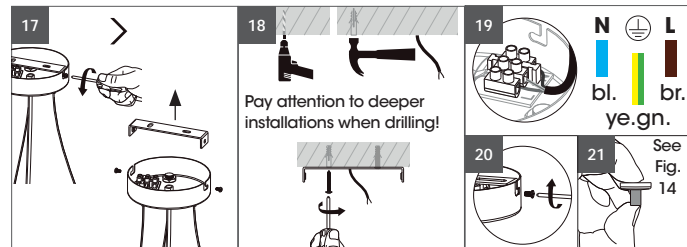


Turn off power supply before starting any installation. Do not connect the device under power.



05 Set light color with selector switch in the luminaire (for power, see technical data).

For the correct positioning see Fig. 08!



Pay attention to deeper installations when drilling!

Legend: N (blue), L (brown), bl. (blue), ye.gn. (yellow-green), br. (brown).

See Fig. 14