

## DESCRIPTION OF PARTS

LED ceiling recessed luminaire

## TECHNICAL DATA

### 33W, L1205xB60xH98, 1mm

PSLE-1200NW70 4000K  
PSLE-1200WW70 3000K  
PSLE-1200SW70 2700K

### 42W, L1505xB60xH98, 1mm

PSLE-1500NW70 4000K  
PSLE-1500WW70 3000K  
PSLE-1500SW70 2700K

## LAMP

The LED light agent cannot be replaced.

## LED DRIVER

nominal voltage, primary: 220-240V~ (50/60 Hz)

## SAFETY



READ THE INSTRUCTIONS BEFORE USING THIS PRODUCT.  
KEEP THE SAFETY AND OPERATING INSTRUCTIONS FOR  
FUTURE USE.

## SAFETY INFORMATION



• The light is only suitable for use in interiors, in dry, enclosed rooms.



• Don't look directly into the LED! The LED is that bright that it might damage your eyes!



• Don't install under power.  
• Follow the instruction manual for installation.  
• Installation only by qualified and authorised persons.



• Do not use the product when it has been damaged (defective covers) or there are operational faults such as flickering, smoking, steaming, crackling noises or the smell of smoke.  
• A damaged or defective product must be changed or repaired by the manufacturer, a service person or a comparable qualified person.  
• Installation only under observance of the valid guidelines specific to application and country among others VDE 0.100.  
• Never open one of the electrical operating agents or plug any objects into them. Such procedures signify a danger to life through electrical shock.  
• Absolutely avoid contact between the product and water or other liquids. For reasons of electrical safety, the light may not be placed in contact with water or other liquids or submerged in water.  
• The product may not be changed or modified.

## PSLE LED

LED ceiling recessed luminaire

PSLE-1200  
PSLE-1500



Anodized  
Aluminium



## INTENDED USAGE

This product will only serve the purpose of illumination.

The light is only suitable for use in interiors, in dry, enclosed rooms.

## SCOPE OF DELIVERY

1 x Luminaire  
1 x set of instructions for assembly, operation and safety

## MAINTENANCE AND CLEANING

The LED light agent cannot be replaced.



• Do not use solvents, such as benzene and similar agents. The light would be damaged thereby.  
• Only use a dry, lint-free cloth for cleaning the product.

## DISPOSAL

The packaging consists of environmentally friendly materials.  
Dispose of them in the local recycling containers.



Do not dispose of this product in the household garbage when it has reached the end of its lifecycle, but rather take it to a disposal center. Your local officials will provide you with information about collection offices and their business hours.



Protection class I



Notification of Risks



CE label



Safety Instructions



The product is only for use in interiors.



Cleaning Instructions



The product may not be disposed of in the household garbage.



It is not allowed to cover luminaires with heat-insulating cover sheet or similar materials!



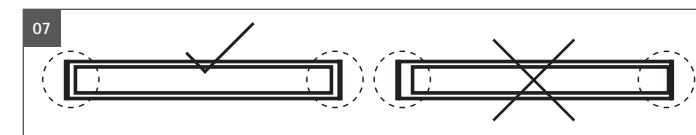
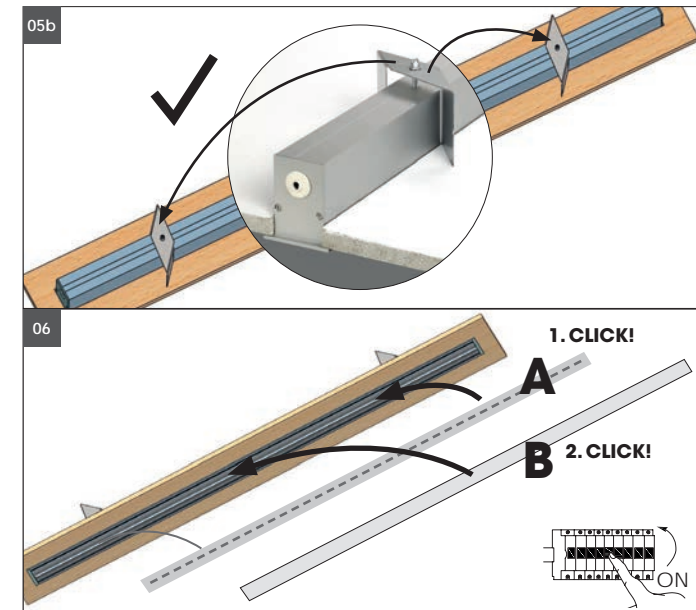
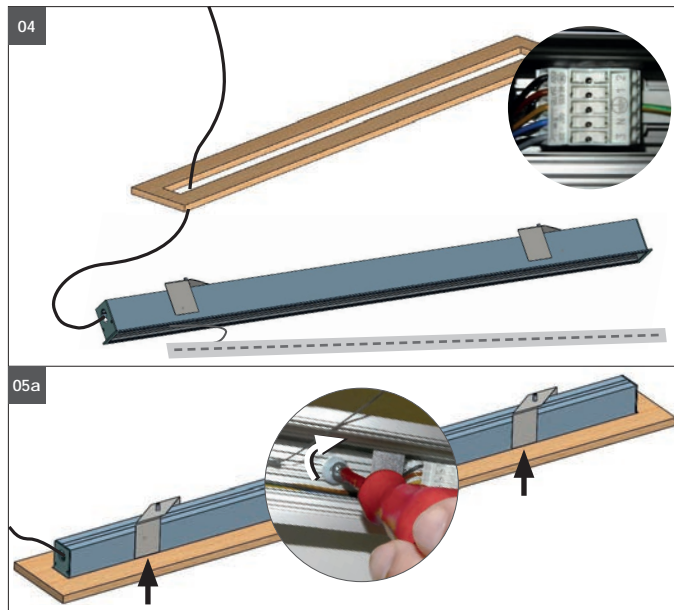
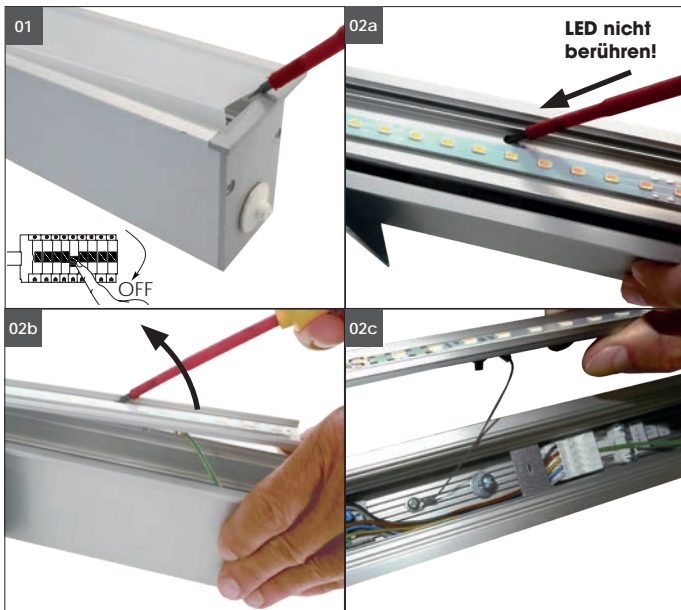
Installation only by qualified and authorised persons.



Don't look directly into the LED! The LED is that bright that it might damage your eyes!

address | contact

A.L.S. GmbH  
Mastorter Str. 31 | 88069 Tettnang (Germany)  
Tel.: +49 (0) 75 42 93 44-0 | Fax.: +49 (0) 75 42 93 44-30  
E-Mail: info@als.de | Web: www.als.de



Ceiling suspension



Turn Off power supply before starting any installation. Do not connect the device under power.

Another installation / assembly / materials / types than provided in the manual sheets, release us from any electrotechnical and electrostatic responsibility.

**Fixing materials:** The warranty is void if the buyer or a third party repairs or modifies the luminaire.

**01.** Lever out opal PMMA cover over entire length, on one side. **Risk of breakage!**

**02.** Remove light canal.

**04.** Lead the connection cable through the cable opening and connect electrical connection to the terminal block.

- 3 DA/1 (version DALI)
- 2 DA/2 (version DALI)
- 1 L = Brown
- N = Blue
- ⊕ = Yellow-green

**05a.** Insert luminaire into ceiling opening (B50xluminaire length + 5 mm) and turn fastening screws on both sides to the right. As a result, the mounting brackets rotate and the lamp is correctly fastened.

**05b. Leuchte auf festen Sitz kontrollieren.**

**06.** Insert light canal (A) and close (opal) PMMA cover (B).

Turn on the power.

**07. For plastic-aluminum covers:**

The temperature-dependent linear expansion is multiple larger with plastic covers than with aluminum profiles. For plastic covers, the total length of the cover is at ta (ambient temperature) 23 °C per meter is at least 1mm shorter than the profile. **The opal cover must not touch the end covers on both sides.**