

## DESCRIPTION OF PARTS

LED pendant, recessed and ceiling luminaire

## TECHNICAL DATA

### 33W, L1205xW45xH100mm

PSLD100-1200NW1 O 4000K  
PSLD100-1200NW2 O 4000K  
PSLD100-1200NW7 O 4000K  
PSLD100-1200WW1 O 3000K  
PSLD100-1200WW2 O 3000K  
PSLD100-1200WW7 O 3000K  
PSLD100-1200SW1 O 2700K  
PSLD100-1200SW2 O 2700K  
PSLD100-1200SW7 O 2700K

### 42W, L1505xW45xH100mm

PSLD100-1500NW1 O 4000K  
PSLD100-1500NW2 O 4000K  
PSLD100-1500NW7 O 4000K  
PSLD100-1500WW1 O 3000K  
PSLD100-1500WW2 O 3000K  
PSLD100-1500WW7 O 3000K  
PSLD100-1500SW1 O 2700K  
PSLD100-1500SW2 O 2700K  
PSLD100-1500SW7 O 2700K

### 64W, L3000xW45xH100mm

PSLD100-3000NW1 O 4000K

## LAMP

The LED light agent cannot be replaced.

## LED DRIVER

nominal voltage, primary: 220-240V~ ( 50/60 Hz )



Protection class I



Notification of Risks



CE label



Safety Instructions



The product is only for use in interiors.



Cleaning Instructions



The product may not be disposed of in the household garbage.

## SAFETY



READ THE INSTRUCTIONS BEFORE USING THIS PRODUCT.  
KEEP THE SAFETY AND OPERATING INSTRUCTIONS FOR FUTURE USE.

## SAFETY INFORMATION



- The light is only suitable for use in interiors, in dry, enclosed rooms.
- The light is not suitable for attaching on uneven surface. The light may otherwise fall. This can result in product damage and / or injuries.



- Don't install under power.
- Follow the instruction manual for installation.
- Installation only by qualified and authorised persons.
- Do not use the product when it has been damaged (defective covers) or there are operational faults such as flickering, smoking, steaming, crackling noises or the smell of smoke.
- A damaged or defective product must be changed or repaired by the manufacturer, a service person or a comparable qualified person.
- Installation only under observance of the valid guidelines specific to application and country among others VDE 0.100.
- Never open one of the electrical operating agents or plug any objects into them. Such procedures signify a danger to life through electrical shock.
- Absolutely avoid contact between the product and water or other liquids. For reasons of electrical safety, the light may not be placed in contact with water or other liquids or submerged in water.
- The product may not be changed or modified.

## MAINTENANCE AND CLEANING

The LED light agent cannot be replaced.



- Do not use solvents, such as benzene and similar agents. The light would be damaged thereby.
- Only use a dry, lint-free cloth for cleaning the product.

## DISPOSAL

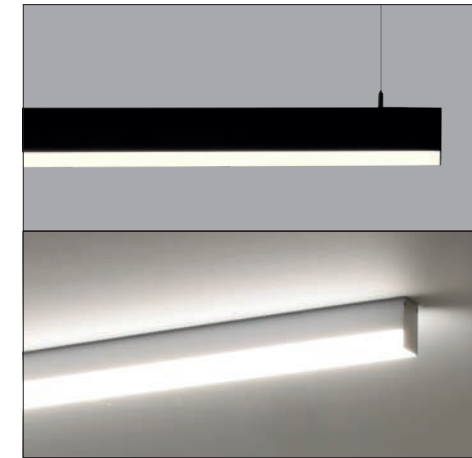


The packaging consists of environmentally friendly materials. Dispose of them in the local recycling containers.

Do not dispose of this product in the household garbage when it has reached the end of its lifecycle, but rather take it to a disposal center. Your local officials will provide you with information about collection offices and their business hours.

## PSLD LED

LED pendant, recessed and ceiling luminaire



Anodized Aluminium



White



Black



## INTENDED USAGE

This product will only serve the purpose of illumination.

The light is only suitable for use in interiors, in dry, enclosed rooms.

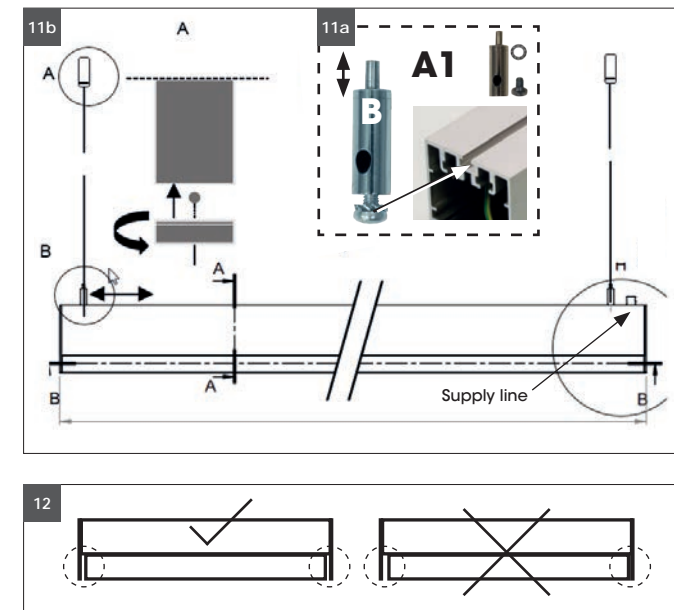
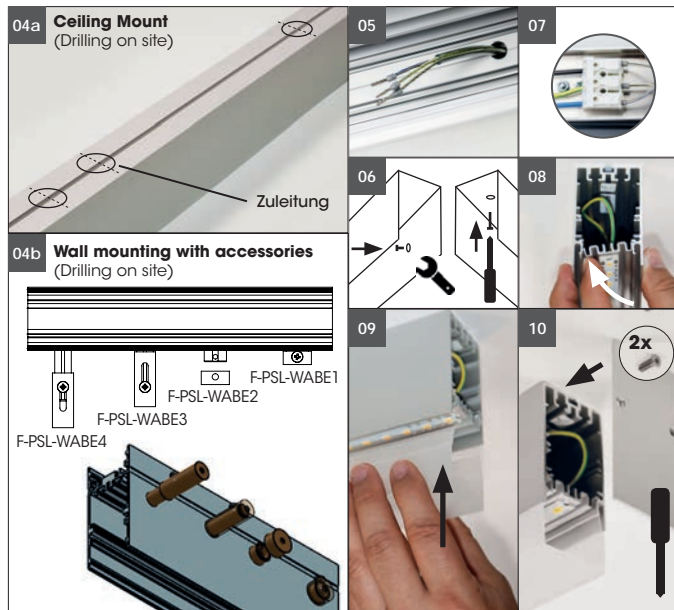
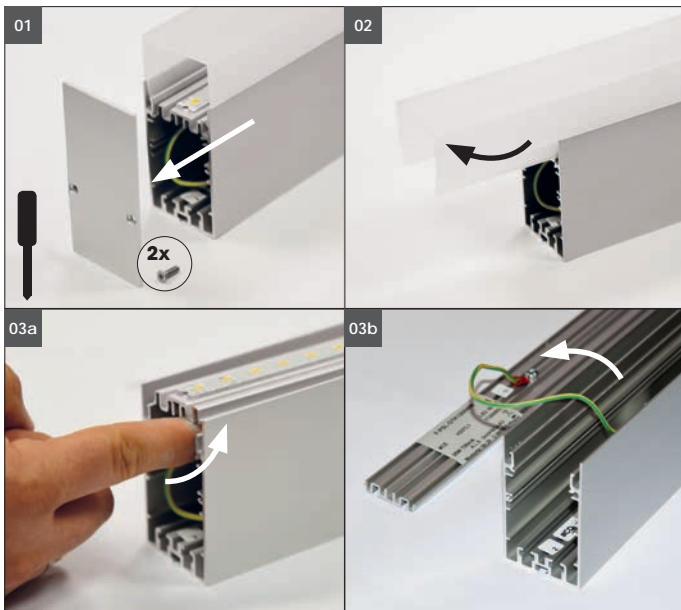
## SCOPE OF DELIVERY

1x LED lamp  
1 x set of instructions for assembly, operation and safety

**for suspended version**  
2 x pendant accessories  
1x pre-wired supply line

address | contact

A.L.S. GmbH  
Mastorter Str. 31 | 88069 Tettnang (Germany)  
Tel.: +49 (0) 75 42 93 44-0 | Fax.: +49 (0) 75 42 93 44-30  
E-Mail: info@als.de | Web: www.als.de



ASSEMBLY INSTRUCTIONS CEILING INSTALLATION



Turn Off power supply before starting any installation.  
Do not connect the device under power.

Another installation / assembly / materials / types than provided in the manual sheets, release us from any electrotechnical and electrostatic responsibility.

**Fixing materials:**  
The warranty is void if the buyer or a third party repairs or modifies the luminaire.

**Note: No holes are provided on the luminaire for cable entry!**

- 01. Remove the end cover on one side of the luminaire.
- 02. Carefully push out the opal cover over the entire length and lift it up.  
**Attention risk of breakage!**

**03a + 03b.** Press light insert up on one side, disengage and put aside. **Do not touch LED's!**

**04a + 04b. Drill hole for fastening and supply line**

Drill the hole for the cable entry project-specific from the rear side (see picture example **04a**). **The position of the power supply unit must be observed!** Install ceiling holes.

- 05. Insert connection cable through cable opening.
- 06. Fix the light to the ceiling / wall.
- 07. Connect the supply cable to the connection point in accordance with the electrical regulations.
- 08. Insert light canal
- 09. Attach opal cover (see note **12**).
- 10. Attach end cover.
- 11a.** Screw the two enclosed mounting clips (see **A1**) with the two toothed washers onto the threaded elements on the top of the luminaire.

MOUNTING MATERIAL

Only use supplied mounting accessories, fasteners, cables. Avoid screws with galvanized surface on the profile. It is preferable to use V2A or higher-quality fastening material. The use of foreign materials without manufacturer approval releases us from any liability.

MOUNTING INSTRUCTIONS PENDANT LUMINAIRE

**11b.** Mount the pendant clip (**A**) at the predestined position, thread the steel cable through the screw-in lid, then screw it to the baldachin.

At the beginning of the rope a ball or flat puck is pressed, this belongs up into the baldachin.

Thread the end of the steel cable into the lights pendant clip (**B**) and set the desired height.

Pressing down the luminaire clip effects the adjustment of the horizontal position. The luminaire clip (**B**) can be moved to the desired position.

It is important to ensure a stable and safe installation.

Connect the supply cable to the connection point in accordance with the electrical regulations.

INSTALLATION INSTRUCTIONS FOR LIGHT CANAL

The pendant lamps may only be replaced with original accessories such as Light inserts, control gear, LED modules. And under no circumstances mechanically modified or loaded with / by other operating devices, LED modules.

**12. For plastic-aluminum covers:**

The temperature-dependent linear expansion is multiple larger with plastic covers than with aluminum profiles. For plastic covers, the total length of the cover is at  $t_a$  (ambient temperature)  $23^\circ\text{C}$  per meter is at least 1mm shorter than the profile. **The opal cover must not touch the end covers on both sides.**