

## DESCRIPTION OF PARTS

LED luminaire

## TECHNICAL DATA

Dimensions (L)

PINR-600/PINE-600: L=600 mm  
PINR-900/PINE-900: L=900 mm  
PINR-1200/PINE-1200: L=1200 mm  
PINR-1500/PINE-1500: L=1500 mm

Electrical power: LED luminaire + LED driver

PINR-600xx: 17W  
PINR-900xx: 26W  
PINR-1200xx: 34W  
PINR-1500xx: 44W

PINE-600xx: 17W  
PINE-900xx: 26W  
PINE-1200xx: 34W  
PINE-1500xx: 44W

Leistung DALI:  
PINE-600xxDD: 18,5W  
PINE-900xxDD: 26W  
PINE-1200xxDD: 35W  
PINE-1500xxDD: 45W

Protection class: I

## LAMP

The LED light agent cannot be replaced.

### LED driver

Nominal voltage,  
primary: 220-240V~ ( 50/60 Hz )



Protection class I



Notification of Risks



CE label



Safety Instructions



The product is only for use in interiors.



Cleaning Instructions



The product may not be disposed of in the household garbage.



RoHS

## SAFETY



READ THE INSTRUCTIONS BEFORE USING THIS PRODUCT.  
KEEP THE SAFETY AND OPERATING INSTRUCTIONS FOR FUTURE USE.

## SAFETY INFORMATION



- The light is only suitable for use in interiors, in dry, enclosed rooms.
- The light is not suitable for attaching on uneven surface. The light may otherwise fall. This can result in product damage and / or injuries.



- Don't install under power.
- Follow the instruction manual for installation.
- Installation only by qualified and authorised persons.
- Do not use the product when it has been damaged (defective covers) or there are operational faults such as flickering, smoking, steaming, crackling noises or the smell of smoke.
- A damaged or defective product must be changed or repaired by the manufacturer, a service person or a comparable qualified person.
- Installation only under observance of the valid guidelines specific to application and country among others VDE 0.100.
- Never open one of the electrical operating agents or plug any objects into them. Such procedures signify a danger to life through electrical shock.
- Absolutely avoid contact between the product and water or other liquids. For reasons of electrical safety, the light may not be placed in contact with water or other liquids or submerged in water.
- The product may not be changed or modified.

## MAINTENANCE AND CLEANING



- The LED light agent cannot be replaced.
- Do not use solvents, such as benzene and similar agents. The light would be damaged thereby.
- Only use a dry, lint-free cloth for cleaning the product.

## DISPOSAL



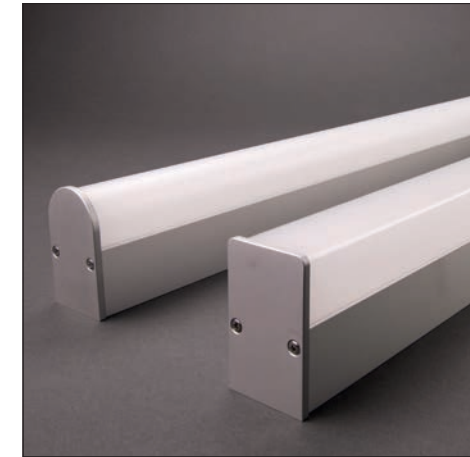
The packaging consists of environmentally friendly materials. Dispose of them in the local recycling containers.

Do not dispose of this product in the household garbage when it has reached the end of its lifecycle, but rather take it to a disposal center. Your local officials will provide you with information about collection offices and their business hours.

## PINLED

LED wall and ceiling-mounted luminaire

PINR  
PINE



anodized aluminium



## INTENDED USAGE

This product will only serve the purpose of illumination.

The light is only suitable for use indoors.

## SCOPE OF DELIVERY

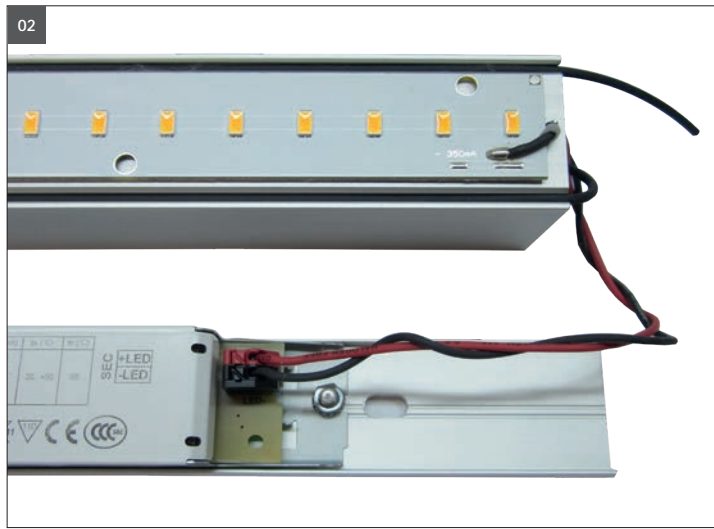
1 x LED luminaire  
2x mounting disc  
1 x set of instructions for assembly, operation and safety

address | contact

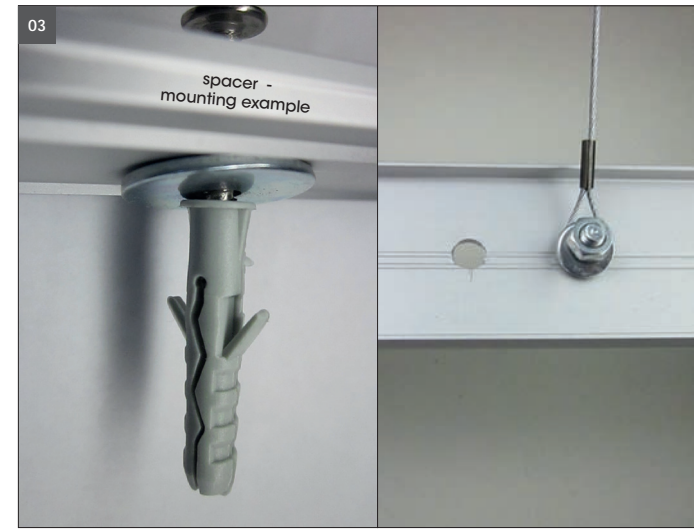
A.L.S. GmbH  
Mastorter Str. 31 | 88069 Tettnang (Germany)  
Tel.: +49 (0) 75 42 93 44-0 | Fax.: +49 (0) 75 42 93 44-30  
E-Mail: info@als.de | Web: www.als.de



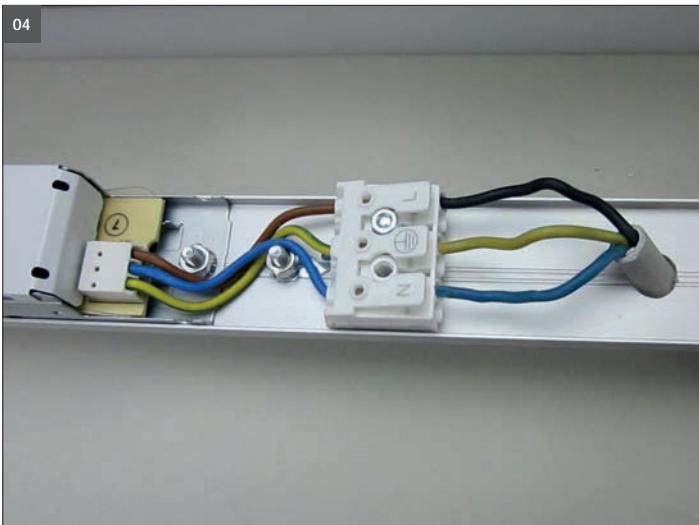
01 Please remove back plate carefully. Don't remove end caps.



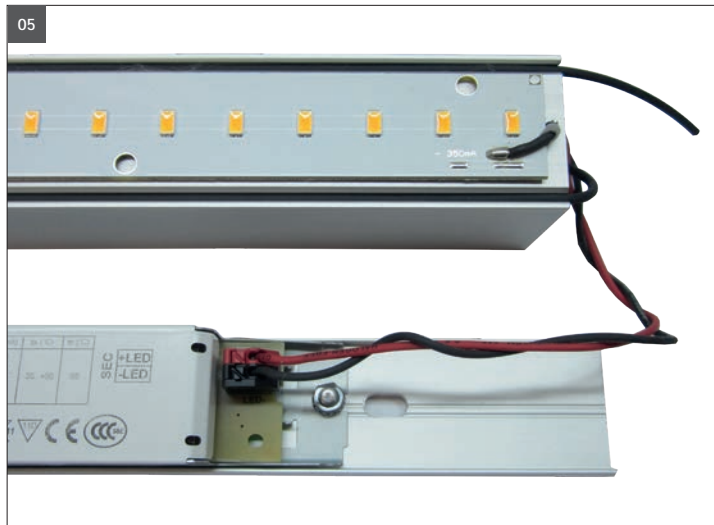
02 For mounting please remove black and red wire. To remove it please press on top of cable gland of each wire and pull on each carefully.



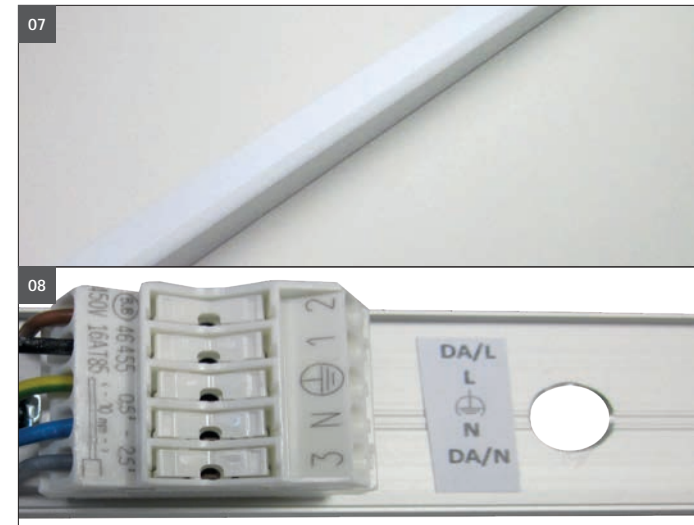
03 Please place mounting plate on right position, mark fixing holes. Use spacer washer between wall and mounting plate and screw fixing plate to wall. ATTENTION! Fitting cannot be fixed to uneven surface. Please make sure that plate is fixed securely to wall. Clip in front part of fitting. Front part has to be secured with safety wire. Safety wire cannot be removed and has to be fixed all time.



04 Please fix cable as required. Make sure each wire is fixed securely.



05 Please fix red wire on + and black wire on - with LED driver. Push cable gland top (red and black) with small screw driver and fix cables accordingly. Pull on each cable to make sure those are fixed securely.



07 (07) Front part has to be flush mounted. Push it hard to mounting plate till you can hear the „Click“. Please check that front part is fixed securely.

08 **Terminal with DALI and mains connection**  
Power supply: L= 1+N 230V AC  
DALI: DA/L=2 / DA/N=3