

DESCRIPTION OF PARTS

LED wall recessed luminaire swiveling with switch
W40xD95xH80 mm (luminaire body Ø27,4xH72 mm)
Cut out size: W33xH72 mm
Light emission: Direct
Housing: White
Housing made of painted die-cast aluminum, clear protective glass

TECHNICAL DATA

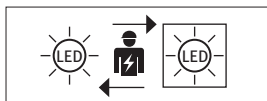
LED incl. driver
AC220-240V
3W
CCT: 3000K
IP class 20
Protection class: I
ON/OFF switch
Not dimmable

LIGHT SOURCE

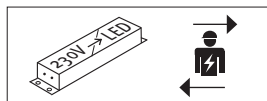
A.L.S. GmbH - EP830255-1-2WW1
This luminaire contains one light source of energy efficiency class G

LED DRIVER

Primary voltage: 220V/50Hz



The light source is only exchangeable by a professional.



The LED driver is only exchangeable by a professional.



Protection class I



Notification of Risks



CE label



Safety Instructions



The product is only for use in interiors.



Cleaning Instructions



The product may not be disposed of in the household garbage.



It is not allowed to cover luminaires with heatinsulating cover sheet or similar materials!



Do not attach deco material.



Installation only by qualified and authorised persons.



Not dimmable



Don't look directly into the LED! The LED is that bright that it might damage your eyes!

SAFETY



READ THE INSTRUCTIONS BEFORE USING THIS PRODUCT. KEEP THE SAFETY AND OPERATING INSTRUCTIONS FOR FUTURE USE.

SAFETY INFORMATION



- The light is suitable for lighting purpose indoors.
- The luminaire is not suitable for mounting on uneven surfaces, softboard. The light may otherwise fall. This can result in product damage and / or injuries. **Check the mounting surface and adjust the mounting material to the ground.**



- Do not let children play with the packaging film. Children can get caught up in it and suffocate while playing.



- Don't install under power.
- Follow the instruction manual for installation.
- Installation only by qualified and authorised persons.



- Do not use the product when it has been damaged (defective covers) or there are operational faults such as flickering, smoking, steaming, crackling noises or the smell of smoke.
- A damaged or defective product must be changed or repaired by the manufacturer, a service person or a comparable qualified person.
- Installation only under observance of the valid guidelines specific to application and country among others VDE 0.100.
- Never open one of the electrical operating agents or plug any objects into them. Such procedures signify a danger to life through electrical shock.
- Absolutely avoid contact between the product and water or other liquids. For reasons of electrical safety, the light may not be placed in contact with water or other liquids or submerged in water.
- The product may not be changed or modified.
- Make sure that the luminaire is never covered by heat insulating mats or thin materials.
- Don't look directly into the LED! The LED is that bright that it might damage your eyes!



MAINTENANCE AND CLEANING

The light source is only exchangeable by a professional.



- Do not use solvents, such as benzene and similar agents. The light would be damaged thereby.
- Only use a dry, lint-free cloth for cleaning the product.

DISPOSAL

The packaging consists of environmentally friendly materials. Dispose of them in the local recycling containers.

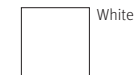


Do not dispose of this product in the household garbage when it has reached the end of its lifecycle, but rather take it to a disposal center. Your local officials will provide you with information about collection offices and their business hours.

NATE

Wall recessed luminaire with switch

NATE-2WW1



White



INTENDED USAGE

This product will only serve the purpose of illumination.

The light is only suitable for use in interiors, in dry, enclosed rooms.

SCOPE OF DELIVERY

1 x LED luminaire with converter
1 installation box with 2 mounting plates
4 threaded screws, 2 countersunk screws
1 x set of instructions for assembly, operation and safety

TECHNICAL CHANGES

Changes in the sense of technical progress can be made without prior notice.

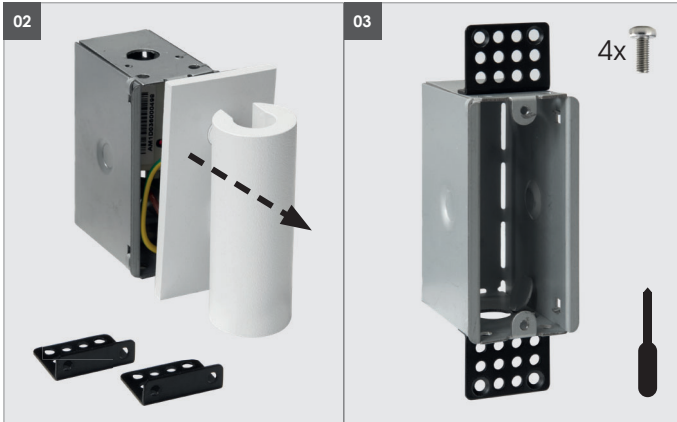
address | contact

A.L.S. GmbH
Mastorter Str. 31 | 88069 Tettnang (Germany)
Tel.: +49 (0) 75 42 93 44-0 | Fax.: +49 (0) 75 42 93 44-30
E-Mail: info@als.de | Web: www.als.de

Carefully remove the LED panel from its packaging.

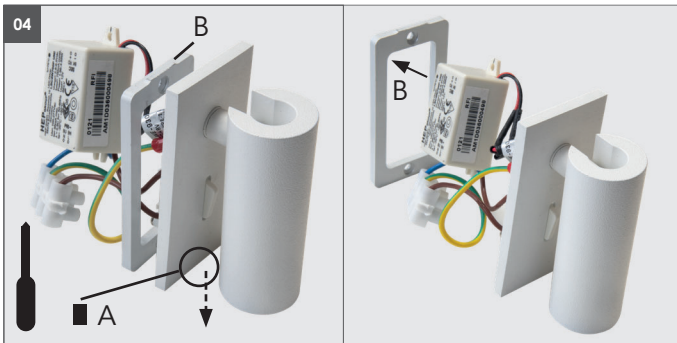


01 Turn off power supply before starting any installation. Do not connect the device under power.

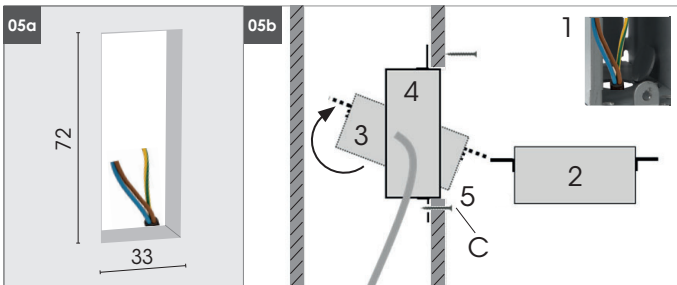


02 Remove the luminaire from the installation housing.

03 Fasten mountings at the top and bottom to the installation housing with 2 threaded screws each.

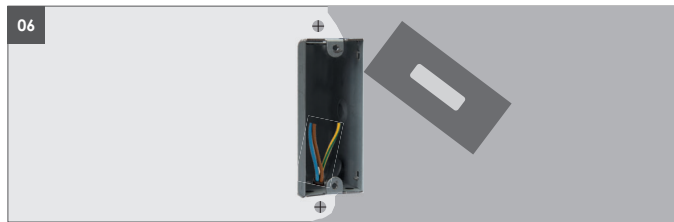


04 Loosen the grub screw (A) on the underside of the lamp housing and remove the mounting frame (B).

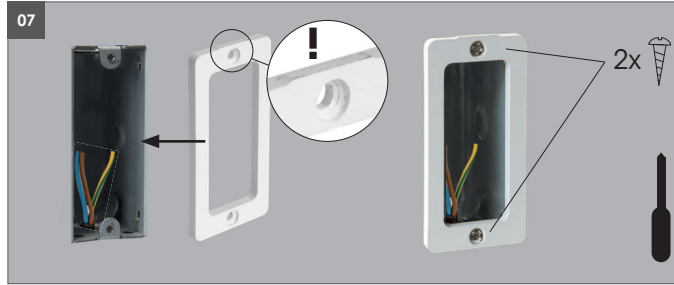


05a Create wall cutout W33xH72 mm.

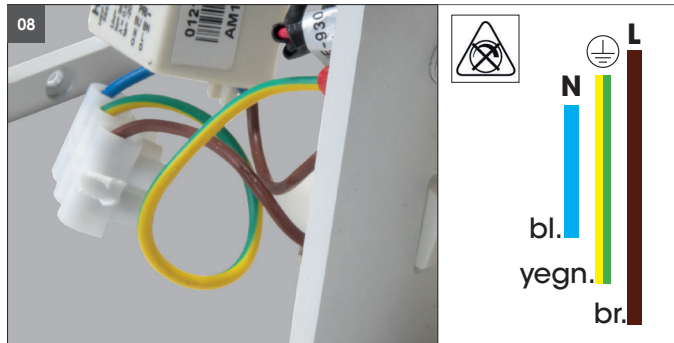
05b Insert cable through the housing opening. Hold the installation housing on the inside and insert it into the wall cutout and turn it upwards. Fasten top and bottom with screws (C) (screws are not included in delivery).



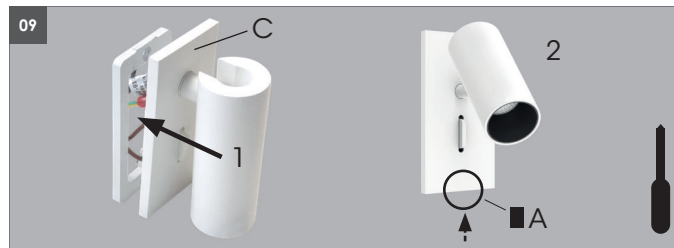
06 Apply putty to the installation housing and fastening screws. **The housing must not be contaminated with putty!** Then grind flat.



07 Place the mounting frame in the correct position (**elevation must be at the top**) and mount it with 2 screws (included in the scope of delivery).



08 Connect the supply cable according to the electrical regulations at the primary connection 230V AC to the LED converter. Only use the supplied LED converter! Other converters or transformers may destroy the light.



09 Insert the cable and power supply unit into the installation housing. Hook the luminaire frame (C) onto the mounting frame from above. Press luminaire flush and screw in from below using grub screw (A). Check that the luminaire is firmly fastened.

10 After installation and connection, switch on all poles of the mains voltage. To do this, switch on the associated circuit breaker or turn on the fuse. Also switch on the associated residual current circuit breaker so that all poles of the mains supply line are connected to the mains voltage.



Looking into the light output for too long can damage the eyes!



It is not allowed to cover the converter with heatinsulating cover sheet or similar materials! Additional drillings in the LED luminaire are not allowed! Do not place any object on the LED pendant luminaire.

Another installation / assembly / materials / types than provided in the manual sheets, release us from any electrotechnical and electrostatic responsibility.

Fixing materials:

The warranty is void if the buyer or a third party repairs or modifies the luminaire.

