

DESCRIPTION OF PARTS

LED Ceiling light cylindrical, integrated power supply
LDE-12NW1 = 4000K colour white
LDE-12WW1 = 3000K colour white
LDE-12NW2 = 4000K colour black
LDE-12WW2 = 3000K colour black
Not dimmable.

TECHNICAL DATA

Power supply: 220 - 240 V/AC, 50 Hz
Wattage: max. approx. 12W
Energy efficiency class: A
Protection class: I
Protection type: IP20
Installation: Ceiling mounted
Light color: 4000K
Lifespan of LEDs approx.: > 30000 h
Ambient temperature: +40 °C
Beam angle: 90°
CRI: >80
Dimensions:
Ø 98 mm, H100 mm

The LED lamp cannot be replaced.



Protection class I



Notification of Risks



CE label



Safety Instructions



The light can be used in interiors.



Cleaning Instructions



The product may not be disposed of in the household garbage.



It is not allowed to cover luminaires with heatinsulating cover sheet or similar materials!



LED luminaire is not dimmable



Don't look directly into the LED! The LED is that bright that it might damage your eyes!

DISPOSAL

The packaging consists of environmentally friendly materials. Dispose of them in the local recycling containers.



Do not dispose of this product in the household garbage when it has reached the end of its lifecycle, but rather take it to a disposal center. Your local officials will provide you with information about collection offices and their business hours.

SAFETY



READ THE INSTRUCTIONS BEFORE USING THIS PRODUCT. KEEP THE SAFETY AND OPERATING INSTRUCTIONS FOR FUTURE USE.

The warranty claim and guarantee is rendered invalid in the event of damage to the product, which is caused by not following the operating instructions. We are not liable for the consequent damage. Because of specific characteristics of LED's (life, deviation in colour etc.) we formulated special terms for planing and installing our LED products. They are part of these installation manual! Should they not be available, request them please! Don't look directly into the LED! The LED is that bright that it might damage your eyes!

SAFETY INFORMATION



- The light is suitable for lighting purpose indoors
- The LED light is provided for load-bearing and suspended ceiling with ceiling cut-out according to data sheet. Sizes see technical data.



- Don't install under power.
- Follow the instruction manual for installation.
- Installation only by qualified and authorised persons.
- Do not use the product when it has been damaged (defective covers) or there are operational faults such as flickering, smoking, steaming, crackling noises or the smell of smoke.
- A damaged or defective product must be changed or repaired by the manufacturer, a service person or a comparable qualified person.
- Installation only under observance of the valid guidelines specific to application and country among others VDE 0.100.
- Never open one of the electrical operating agents or plug any objects into them. Such procedures signify a danger to life through electrical shock.
- Absolutely avoid contact between the product and water or other liquids. For reasons of electrical safety, the light may not be placed in contact with water or other liquids or submerged in water.
- The product may not be changed or modified.
- Don't look directly into the LED! The LED is that bright that it might damage your eyes!



MAINTENANCE AND CLEANING

The LED lamp cannot be replaced.



- Do not use solvents, such as benzene and similar agents. The light would be damaged thereby.
- Only use a dry, lint-free cloth for cleaning the product.

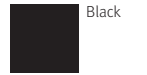
LDE

LED Ceiling light

LDE-12NW1 / LDE-12WW1
LDE-12NW2 / LDE-12WW2



White



Black



INTENDED USAGE

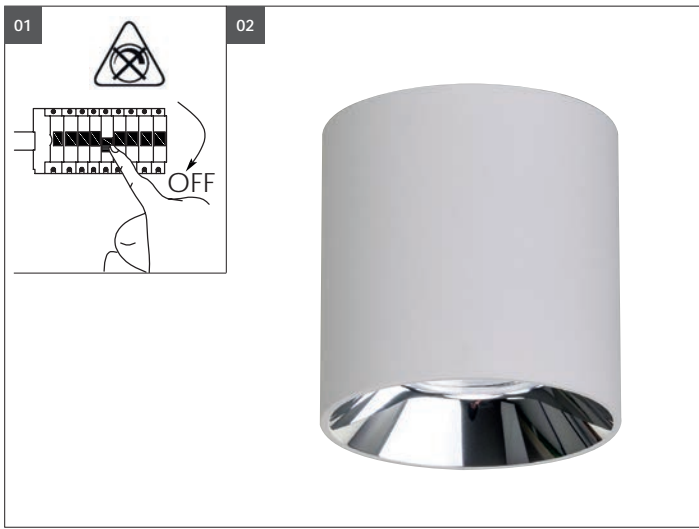
This product will only serve the purpose of illumination.

SCOPE OF DELIVERY

1 x LED ceiling light
1 x set of instructions for assembly, operation and safety

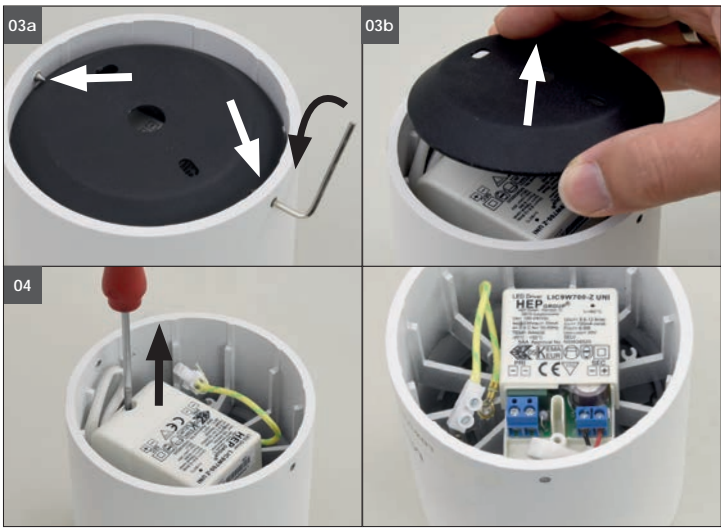
address | contact

A.L.S. GmbH
Mastorter Str. 31 | 88069 Tettnang (Germany)
Tel.: +49 (0) 75 42 93 44-0 | Fax.: +49 (0) 75 42 93 44-30
E-Mail: info@als.de | Web: www.als.de



01 Switch off before installation. Switch on only after complete installation and examination of the circuit. Professional electrician for installation and maintenance only. Turn Off power supply before starting any installation. Read instructions & check you have all the tools & accessories to complete the installation correctly. Open a hole according to the cutout size of led downlight.

02 Carefully remove the luminaire from its packaging. Check for damage and complete delivery.

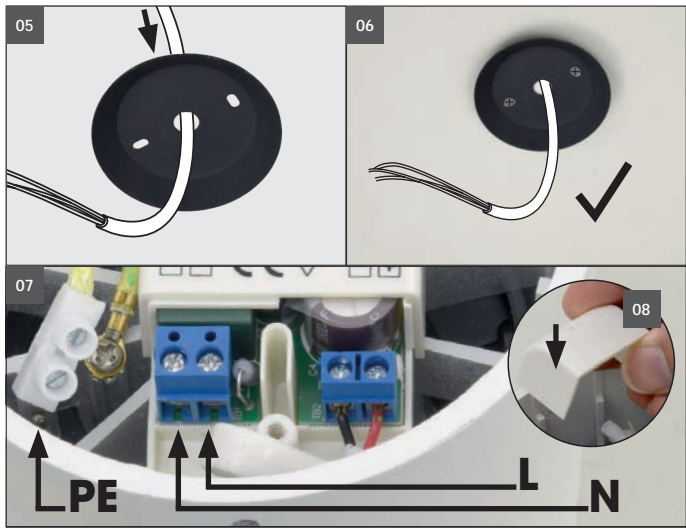


Fixing materials: cable relief, clamps
The warranty is void if the buyer or a third party repairs or modifies the luminaire.

03a Release grub screws with Allen wrench on both sides at the upper edge of the luminaire.

03b Remove mounting plate.

04 Remove the cover of the power supply.



Install ceiling holes.
Check for underlying installations before drilling!

05 Lead the connection cable through the central hole of the mounting plate.

06 Fix the mounting plate to the ceiling. Ensure a tight fit.

07 Connect power cable according to the electrical DIN VDE 0100 regulations at the cable connection of the luminaire **L, N, PE**.

08 Fix the cover back.



09 Tighten grub screws with Allen wrench on both sides. Check the luminaire for tightness.

 It is not allowed to cover luminaires with heatinsulating cover sheet or similar materials!
Additional drillings in the LED luminaire are not allowed!



Looking into the light exit for too long can damage your eyes!

11 Turn on the power.

Another installation / assembly / materials / types than provided in the manual sheets, release us from any electrotechnical and electrostatic responsibility.