

DESCRIPTION OF PARTS

LED High Bay Light with chain suspension
Metal housing black, end cap blue
Clear glass cover
Integrated electronic power supply

TECHNICAL DATA

Article number	HBA-60NW2	HBA-120NW2
Connected load	58W	112W
Dimensions (LxWxH)	415x106x100 mm	665x106x100 mm
Suspension distance	250 mm	500 mm
Weight	2 kg	3 kg
Circuit breaker 16A type B 230V~	12 pcs.	9 pcs.
Circuit breaker 16A type C 230V~	18 pcs.	16 pcs.

- Voltage 220-240V, 50 Hz
- Chain length 150 cm
- Light color 4000K
- Protection class: I
- Protection type: IP20
- Ambient temperature -40 to +45°C
- Not dimmable

LAMP

SMD-LED



Protection class I



Notification of Risks



CE label



Safety Instructions



The light can be used in interiors.



Cleaning Instructions



The product may not be disposed of in the household garbage.



It is not allowed to cover luminaires with heat-insulating cover sheet or similar materials!



Don't look directly into the LED! The LED is that bright that it might damage your eyes!



Danger of explosion in a chemically aggressive or explosive atmosphere



LED luminaire gets very warm during operation. Be careful when touching the body.



Not dimmable

MAINTENANCE AND CLEANING

The LED light agent cannot be replaced.



- Do not use solvents, such as benzene and similar agents. The light would be damaged thereby.
- Only use a dry, lint-free cloth for cleaning the product.

SAFETY



READ THE INSTRUCTIONS BEFORE USING THIS PRODUCT. KEEP THE SAFETY AND OPERATING INSTRUCTIONS FOR FUTURE USE.

SAFETY INFORMATION



- The light can be used in interiors.
- The light is not suitable for attaching on uneven surface. The light may otherwise fall. This can result in product damage and / or injuries.
- Before installing the LED light, please check capacity of ceiling/ beams, only use mounting material that is suitable for installation. After installation, check that the LED luminaire is firmly in position. The light may otherwise fall down. This can result in product damage and / or injuries.



- Don't install under power.
- Follow the instruction manual for installation.
- Installation only by qualified and authorised persons.
- Do not use the product when it has been damaged (defective covers) or there are operational faults such as flickering, smoking, steaming, crackling noises or the smell of smoke.
- A damaged or defective product must be changed or repaired by the manufacturer, a service person or a comparable qualified person.
- Installation only under observance of the valid guidelines specific to application and country among others VDE 0.100.
- Never open one of the electrical operating agents or plug any objects into them. Such procedures signify a danger to life through electrical shock.
- Absolutely avoid contact between the product and water or other liquids. For reasons of electrical safety, the light may not be placed in contact with water or other liquids or submerged in water.
- The product may not be changed or modified.
- In operation or after extended periods of operation, avoid touching the external surface of the LED luminaire, there is a danger of high temperatures that can cause burns.
- Do not use the LED luminaire in areas with explosive or chemical aggressive atmosphere or reduced ventilation.
- The warranty claim and guarantee is rendered invalid in the event of damage to the product, which is caused by not following the operating instructions. We are not liable for the consequent damage. Because of specific characteristics of LED's (life, deviation in colour etc.) we formulated special terms for planning and installing our LED products. They are part of these installation manual! Should they not be available, request them please!
- Don't look directly into the LED! The LED is that bright that it might damage your eyes!



DISPOSAL

The packaging consists of environmentally friendly materials. Dispose of them in the local recycling containers.



Do not dispose of this product in the household garbage when it has reached the end of its lifecycle, but rather take it to a disposal center. Your local officials will provide you with information about collection offices and their business hours.

HBA

LED HIGH BAY LIGHT

HBA-60NW2
HBA-120NW2



Black/blue



TECHNICAL NOTE



Luminaires which are divided on 3 phases and operated in higher number have an accordingly high inrush current!
To protect switching actuators KNX etc., we recommend using current limiters or auxiliary relays on site.
See inrush current table.

INTENDED USAGE

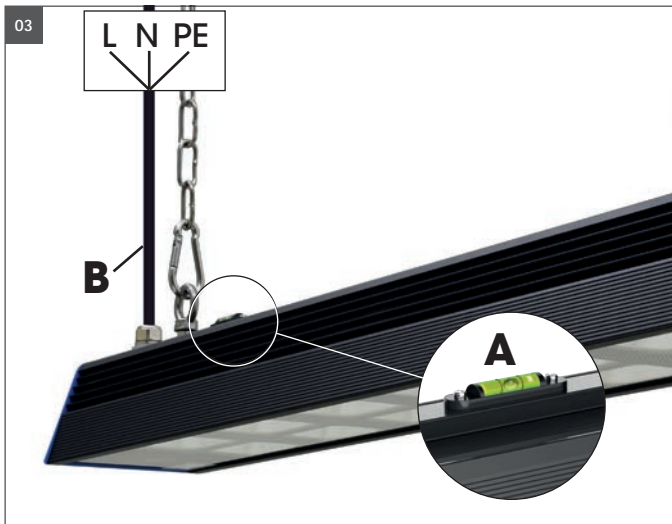
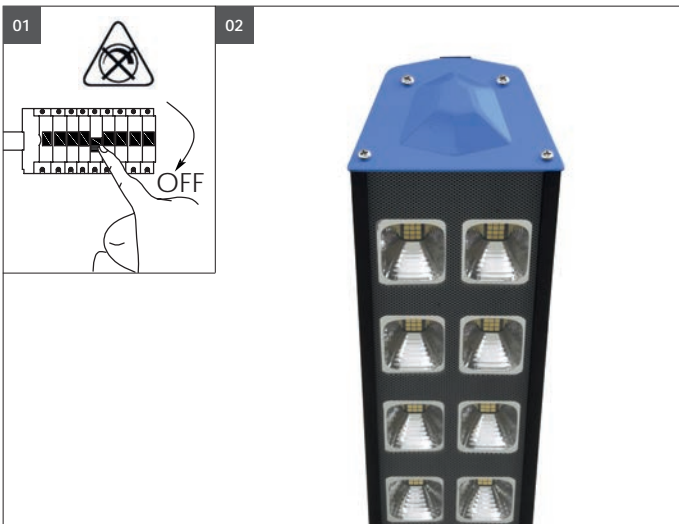
This product will only serve the purpose of illumination. The light can be used in interiors.

SCOPE OF DELIVERY

- 1 x LED High bay light
- 2 x Chain
- 2 x Carbine
- 1 x Prewired cable L150 cm
- 1 x set of instructions for assembly, operation and safety

address | contact

A.L.S. GmbH & Co. KG
Mastorter Str. 29 | 88069 Tettnang (Germany)
Tel.: +49 (0) 75 42 93 44-0 | Fax.: +49 (0) 75 42 93 44-30
E-Mail: info@als.de | Web: www.als.de



Assembly instructions



Fixing materials:

The warranty is void if the buyer or a third party repairs or modifies the luminaire.

01 Switch off before installation. Switch on only after complete installation and examination of the circuit. Professional electrician for installation and maintenance only. Turn Off power supply before starting any installation. Read instructions & check you have all the tools and accessories to complete the installation correctly.

02 Carefully remove the luminaire from its packaging.

Caution!

Note cold start and switch-on current for multiple parallel connected lamps. Consider the max. switching load for automatic circuit breaker and switching elements

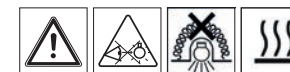
Model	16A type B	16A type C
58W	12 pcs.	18 pcs.
112W	9 pcs.	16 pcs.



03 Suspend the luminaire at the prepared mounting points with the supplied chains and carabiners. To assemble a spirit level (**A**) is attached to the upper metal housing.

Connect power cable **B** (L150 cm) according to the electrical DIN VDE 0100 regulations at the cable connection of the luminaire **L, N, PE**.

Another installation / assembly / materials / types than provided in the manual sheets, release us from any electrotechnical and electrostatic responsibility.



Looking into the light exit for too long can damage your eyes!

04 Turn on the power.