

## DESCRIPTION OF PARTS

LED NEON LIGHT FLEXY, -FLEX-MODUL, 700 LED's on roll  
TOP Front View, 2835 SMD LED, incl. accessories, IP66  
Without self-adhesive backing, see accessories













## TECHNICAL DATA

24VDC, 9.6W per meter, 140LED/m, CRI90, IP66  
Distance cutting line: 50mm, every 7 LED, dimmable with OT dimm (PWM)

5m, LED-FLEX-MODUL 10x10 mm, with end cap 12x12 mm  
**Color temperature**  
FLEXYIP9-700NW: 4000K  
FLEXYIP9-700WW: 3000K


## LAMP

SMD-LED  
The LED light agent cannot be replaced.

	Protection class III		Notification of Risks
	CE label		Safety Instructions
	The light can be used in interiors and exteriors.		Cleaning Instructions
	The product may not be disposed of in the household garbage.		Don't look directly into the LED! The LED is that bright that it might damage your eyes!
	Installation only by qualified and authorised persons.		Do not expose product to heat source
	ESD protection component		Not recommended for children under 3 years

## DISPOSAL

The packaging consists of environmentally friendly materials. Dispose of them in the local recycling containers.

 Do not dispose of this product in the household garbage when it has reached the end of its lifecycle, but rather take it to a disposal center. Your local officials will provide you with information about collection offices and their business hours.

## SAFETY



READ THE INSTRUCTIONS BEFORE USING THIS PRODUCT.  
KEEP THE SAFETY AND OPERATING INSTRUCTIONS FOR FUTURE USE.

## SAFETY INFORMATION



- The flexy stripe is suitable for indoor and outdoor use.
- Before mounting, the intended splice must be thoroughly cleaned (free from dust, oil and grease layers).
- Assembly only on suitable carrier material, for example Aluminum regarding heat conduction as well as reliable adhesion of the adhesion foil.



- Don't install under power.
- Follow the instruction manual for installation.
- Installation only by qualified and authorised persons.
- Do not use the product when it has been damaged (defective covers) or there are operational faults such as flickering, smoking, steaming, crackling noises or the smell of smoke.
- A damaged or defective product must be changed or repaired by the manufacturer, a service person or a comparable qualified person.
- Installation only under observance of the valid guidelines specific to application and country among others VDE 0.100.
- Never open one of the electrical operating agents or plug any objects into them. Such procedures signify a danger to life through electrical shock.
- Absolutely avoid contact between the product and water or other liquids. For reasons of electrical safety, the light may not be placed in contact with water or other liquids or submerged in water.



- The product may not be changed or modified.
- Keep the remote and its components out of the reach of children. There is a risk of swallowing the batteries inside the remote control. Do not leave packaging material lying around carelessly, there is danger of suffocation. The LED remote control and the controller is not a toy for kids!
- Risk of injury for children! If children or persons who can not assess the dangers use the LED control, there is a risk of injury!
- The warranty claim and guarantee is rendered invalid in the event of damage to the product, which is caused by not following the operating instructions. We are not liable for the consequent damage. Because of specific characteristics of LED's (life, deviation in colour etc.) we formulated special terms for planing and installing our LED products. They are part of these installation manual! Should they not be available, request them please!
- Don't look directly into the LED! The LED is that bright that it might damage your eyes!
- Storage temperature: -40+80°C
- Processing temperature: +10°C (glue)
- Operating temperature in operation: -25+60°C



## MAINTENANCE AND CLEANING

The LED light agent cannot be replaced.



- Do not use solvents, such as benzene and similar agents. The flexy stripe would be damaged thereby.
- Only use a dry, lint-free cloth for cleaning the product.

## FLEXYIP9 Front View

Flexible LED-stripe

FLEXYIP9-700NW  
FLEXYIP9-700WW



## INTENDED USAGE

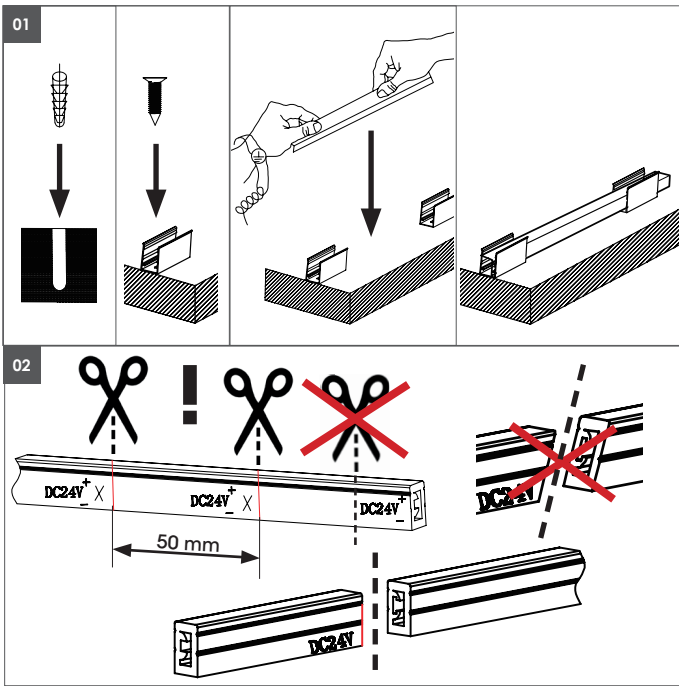
This product will only serve the purpose of illumination. The LED-stripe can be used in interiors.

## SCOPE OF DELIVERY

1 x ESD packaging, content, flexy stripe 5m  
1 x set of instructions for assembly, operation and safety

address | contact

A.L.S. GmbH  
Mastorter Str. 31 | 88069 Tettnang (Germany)  
Tel.: +49 (0) 75 42 93 44-0 | Fax.: +49 (0) 75 42 93 44-30  
E-Mail: info@als.de | Web: www.als.de



## Assembly instructions



Turn Off power supply before starting any installation.  
Do not connect the device under power.

Another installation / assembly / materials / types than provided in the manual sheets, release us from any electrotechnical and electrostatic responsibility.

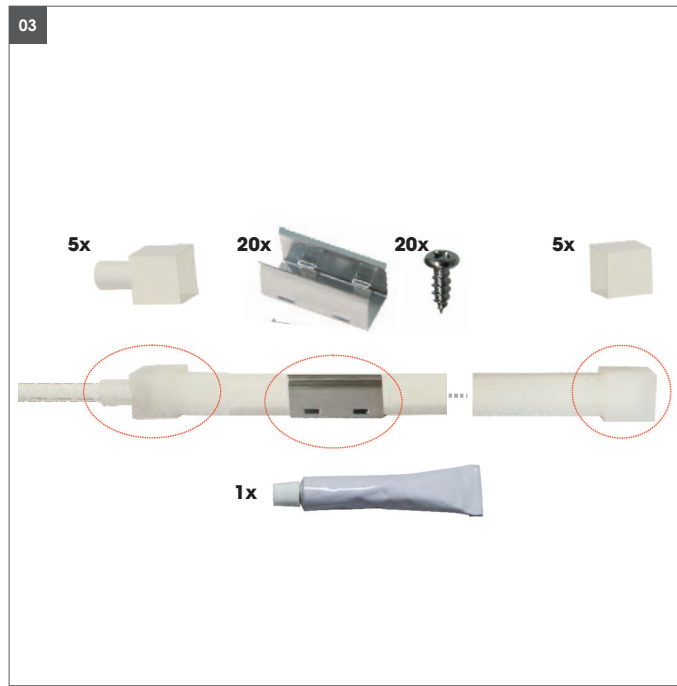
It is recommended that this product is installed by a qualified electrician.

**01.** The intended mounting surface must be stable. The LED NEON LIGHT FLEXY can not be mounted on sharp-edged edges. The LED NEON LIGHT FLEXY can only be fastened with mounting clips! It must not be processed with assembly adhesive. After installing the mounting clips, gently push the NEON LIGHT FLEXY LED into the retaining clips. During assembly, do not exert excessive pressure on the LED components!

**02.** The LED NEON LIGHT FLEXY can only be shortened and / or recalculated at the (see picture) contact points (cutting lines all 50 mm, or 7 LEDs). Never cut between the LED components, this section would be destroyed. No mounting at right angles around edges, no tight radii and or buckling, twisting.

### Only use suitable 24V DC LED converters

The LED NEON LIGHT FLEXY can be dimmed via a light control module (TRL-OTDIM 1-10V or TRL-OTDALI dimmable via DALI, CASAMBI Bluetooth CAS-L1K).



### 03. Accessory:

Use mounting clips and connecting caps provided in the accessories. Close the end with the cap and silicone glue.

Avoid excessive pressure on the LEDs and resistors during assembly.

Do not use additional sharp adhesives such as superglue. This destroys the shell of the LED Neon LIGHT FLEXY. Double-sided foam tape can not be used for assembly as the LED NEON LIGHT FLEXY back is made of a silicone sleeve. The adhesive of the assembly tape finds no support. The LED NEON LIGHT FLEXY can thus detach and fall down.

The flexy tape must not be exposed to additional heat sources.

### Connections / Commissioning

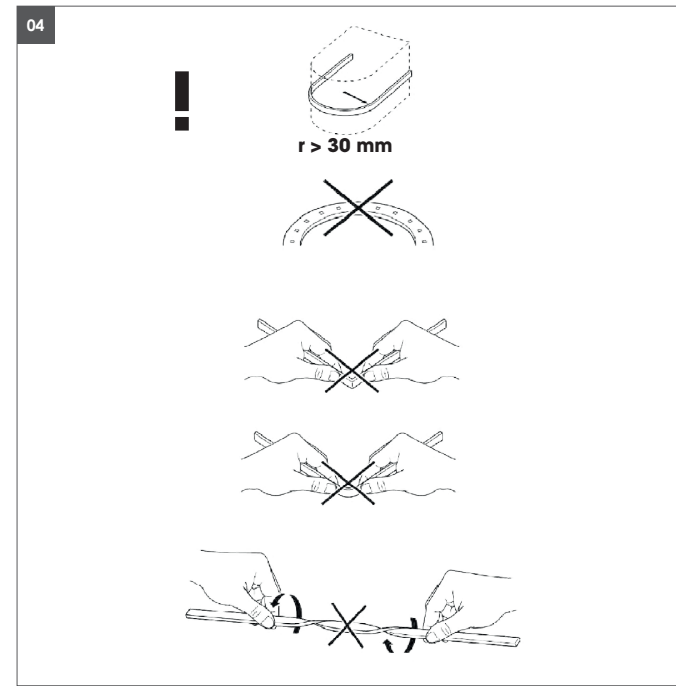
#### Do not connect live!

+24V from converter

Use only lead-free solder and suitable soldering stations for soldering. Pay attention to the soldering temperature. Take precautions according to the ESD regulations.

Pay attention to the polarity of the LED strips during installation. If the polarity is wrong, there is no function and the LED strip can be destroyed! When extending the NEON LIGHT FLEXY LED, pay attention to the overall performance.

The LED output from the LED converter must not be overloaded, charge 10% reserve.



**04.** Minimum radius of bending 30 mm. **Do not bend**, bending will damage the conductors.



Matching controller for FLEXYIP9-700NW / FLEXYIP9-700WW		
Z-FBFLEXYSSWSCW	X max 200W	
TRL-OTDALI	X max 120W	
TRL-OTDIM	X max 120W	
CAS-L1K	X max 144W	

