

DESCRIPTION OF PARTS

Flexible LED-stripe 24W (4,8W/m) 50x0,48W/24Vdc
CRI>90

TECHNICAL DATA

FLEXY-300WWN-CRI90 = 3000K, width: 8 mm
FLEXY-300CWN-CRI90 = 6000K-6500K, width: 8 mm

Length: 5m = 50 segments à 100mm | 300 LED = 50 segments à 6 LED | are cuttable after each segment

FLEXY-300WWN-CRI90N = 3000K, width: 8 mm
Length: 5m = 50 segments à 100mm | 350 LED = 50 segments à 6 LED | are cuttable after each segment

LAMP

SMD-LED
The LED light agent cannot be replaced.



Protection class III



Notification of Risks



CE label



Safety Instructions



The light can be used in interiors and exteriors.



Cleaning Instructions



The product may not be disposed of in the household garbage.



Don't look directly into the LED! The LED is that bright that it might damage your eyes!



Installation only by qualified and authorised persons.

MAINTENANCE AND CLEANING

The LED light agent cannot be replaced.



- Do not use solvents, such as benzene and similar agents. The light would be damaged thereby.
- Only use a dry, lint-free cloth for cleaning the product.

DISPOSAL

The packaging consists of environmentally friendly materials. Dispose of them in the local recycling containers.



Do not dispose of this product in the household garbage when it has reached the end of its lifecycle, but rather take it to a disposal center. Your local officials will provide you with information about collection offices and their business hours.

SAFETY



READ THE INSTRUCTIONS BEFORE USING THIS PRODUCT. KEEP THE SAFETY AND OPERATING INSTRUCTIONS FOR FUTURE USE.



- The light can be used in interiors.
- Before mounting, the intended splice must be thoroughly cleaned (free from dust, oil and grease layers).
- Assembly only on suitable carrier material, for example Aluminum regarding heat conduction as well as reliable adhesion of the adhesion foil.



- Don't install under power.
- Follow the instruction manual for installation.
- Installation only by qualified and authorised persons.
- Do not use the product when it has been damaged (defective covers) or there are operational faults such as flickering, smoking, steaming, crackling noises or the smell of smoke.
- A damaged or defective product must be changed or repaired by the manufacturer, a service person or a comparable qualified person.
- Installation only under observance of the valid guidelines specific to application and country among others VDE 0.100.
- Never open one of the electrical operating agents or plug any objects into them. Such procedures signify a danger to life through electrical shock.
- Absolutely avoid contact between the product and water or other liquids. For reasons of electrical safety, the light may not be placed in contact with water or other liquids or submerged in water.
- The product may not be changed or modified.
- In operation or after extended periods of operation, avoid touching the external surface of the LED luminaire, there is a danger of high temperatures that can cause burns.
- Do not use the LED luminaire in areas with explosive or chemical aggressive atmosphere or reduced ventilation.
- The warranty claim and guarantee is rendered invalid in the event of damage to the product, which is caused by not following the operating instructions. We are not liable for the consequent damage. Because of specific characteristics of LED's (life, deviation in colour etc.) we formulated special terms for planning and installing our LED products. They are part of these installation manual! Should they not be available, request them please!
- Don't look directly into the LED! The LED is that bright that it might damage your eyes!



FLEXY 300 CRI90

Flexible LED-stripe

FLEXY-300WWN-CRI90
FLEXY-300CWN-CRI90
FLEXY-300WWN-CRI90N



INTENDED USAGE

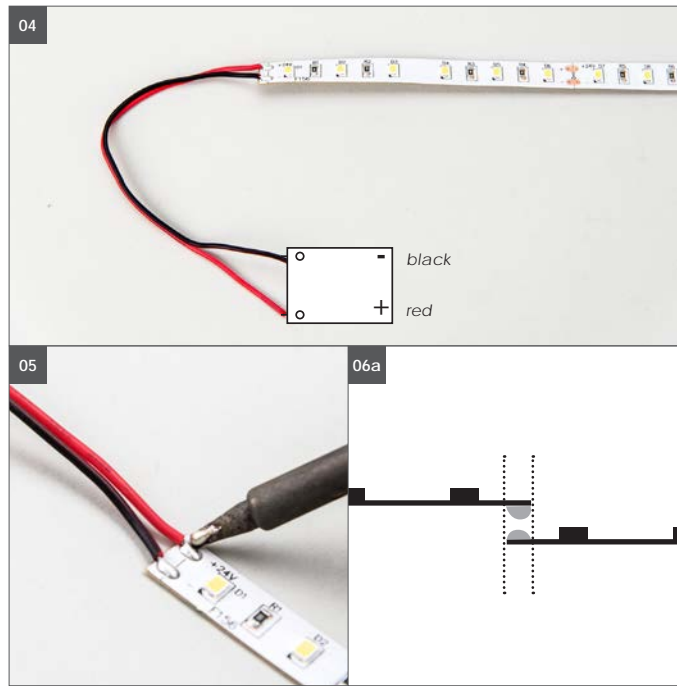
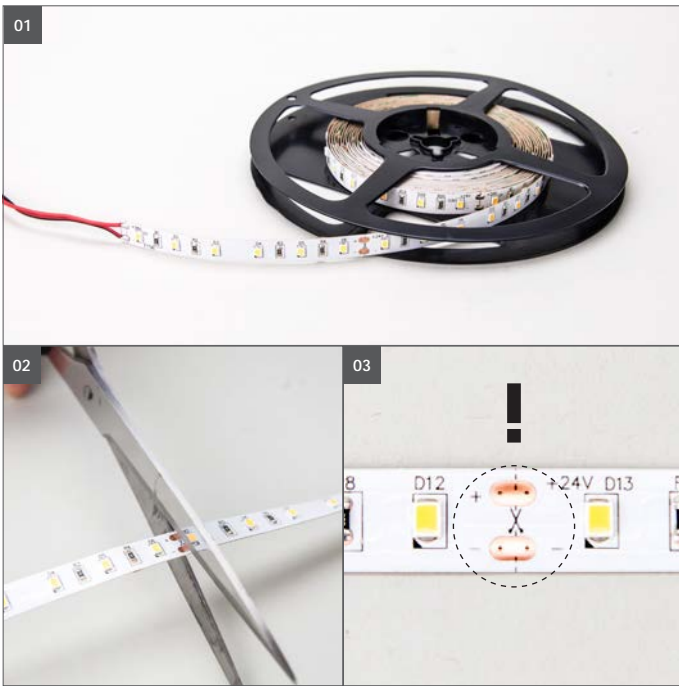
This product will only serve the purpose of illumination. The LED-stripe can be used in interiors.

SCOPE OF DELIVERY

1 x FLEXY 300
1 x set of instructions for assembly, operation and safety

address | contact

A.L.S. GmbH & Co. KG
Mastorter Str. 31 | 88069 Tettnang (Germany)
Tel.: +49 (0) 75 42 93 44-0 | Fax.: +49 (0) 75 42 93 44-30
E-Mail: info@als.de | Web: www.als.de



Assembly instructions



Turn Off power supply before starting any installation.
Do not connect the device under power.

Another installation / assembly / materials / types than provided in the manual sheets, release us from any electrotechnical and electrostatic responsibility.

It is recommended that these products are installed by a qualified electrician.

01. Only install on a suitable base (aluminium - thermal management, grip).

02. Can be cut to length ...

03. ... **only at certain points!**

04. Power supply 24V DC

red = plus (+) / black = ground (-).

Do not wire the wrong way! Connect the module only with a suitable LED-power supply 24V DC constant voltage and enough power.

05. A feed line can be soldered to the remainder module.

06a. Segments can be connected by soldering of a bridge.

Solder up the upper soldering point (**pict. 06b**) with the lower point (**pict. 06c**). Soldering points become visible as soon as protection foil is taken off. Don't take off the foil completely as not to lose the adhesive power of FLEXY. Attention! Maximum 5m of Flex strip can be installed with one feeder. For more, additional feeding is required.

07. Minimum radius of bending 3 cm.

08. Do not bend. bending will damage the conductors.

