

DESCRIPTION OF PARTS

LED panel Ø 600 x 24 mm pendant luminaire
Light emission: direct / indirect
Painted aluminium frame RAL 9003
Seamless to the edge, no light leak

TECHNICAL DATA

LED incl. driver
220-240V~ 50/60 Hz
Total power consumption: 40 W

Light color: ELEDR-40NW31: 4000K
ELEDR-40WW31: 3000K

IP class 20
Protection class: II
Flickerfree
EEC/A+

LAMP

LED - side LEDs
Light emission direct + indirect

LED DRIVER

nominal voltage,
primary: 220-240V~ (50/60 Hz)
Pout 55W/ 1,9A. iout

SAFETY



READ THE INSTRUCTIONS BEFORE USING THIS PRODUCT.
KEEP THE SAFETY AND OPERATING INSTRUCTIONS FOR
FUTURE USE.

SAFETY INFORMATION



- The light is only suitable for use in interiors, in dry, enclosed rooms.
- The light is not suitable for attaching on uneven surface. The light may otherwise fall. This can result in product damage and / or injuries.



- Don't install under power.
- Follow the instruction manual for installation.
- Installation only by qualified and authorised persons.
- Do not use the product when it has been damaged (defective covers) or there are operational faults such as flickering, smoking, steaming, crackling noises or the smell of smoke.
- A damaged or defective product must be changed or repaired by the manufacturer, a service person or a comparable qualified person.
- Installation only under observance of the valid guidelines specific to application and country among others VDE 0.100.
- Never open one of the electrical operating agents or plug any objects into them. Such procedures signify a danger to life through electrical shock.
- Absolutely avoid contact between the product and water or other liquids. For reasons of electrical safety, the light may not be placed in contact with water or other liquids or submerged in water.
- The product may not be changed or modified.

ELEDR

LED pendant luminaire 600

ELEDR-40NW31
ELEDR-40WW31



White



INTENDED USAGE

This product will only serve the purpose of illumination.

The light is only suitable for use in interiors, in dry, enclosed rooms.

SCOPE OF DELIVERY

1 x LED luminaire / wire ropes for suspension
1 x LED driver
1 x set of instructions for assembly, operation and safety

MAINTENANCE AND CLEANING

The LED light agent cannot be replaced.



- Do not use solvents, such as benzene and similar agents. The light would be damaged thereby.
- Only use a dry, lint-free cloth for cleaning the product.

DISPOSAL

The packaging consists of environmentally friendly materials.
Dispose of them in the local recycling containers.



Do not dispose of this product in the household garbage when it has reached the end of its lifecycle, but rather take it to a disposal center. Your local officials will provide you with information about collection offices and their business hours.



Protection class II



Notification of Risks



CE label



Safety Instructions



The product is only
for use in interiors.



Cleaning Instructions



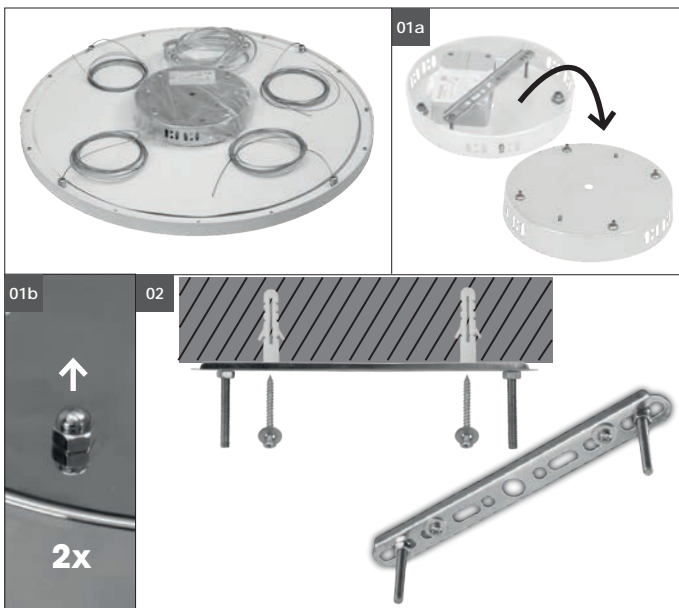
The product may not
be disposed of in the
household garbage.



It is not allowed to
cover luminaires
with heatinsulating
cover sheet or similar
materials!

address | contact

A.L.S. GmbH
Mastorter Str. 31 | 88069 Tettnang (Germany)
Tel.: +49 (0) 75 42 93 44-0 | Fax.: +49 (0) 75 42 93 44-30
E-Mail: info@als.de | Web: www.als.de



Assembly instructions for LED pendulum

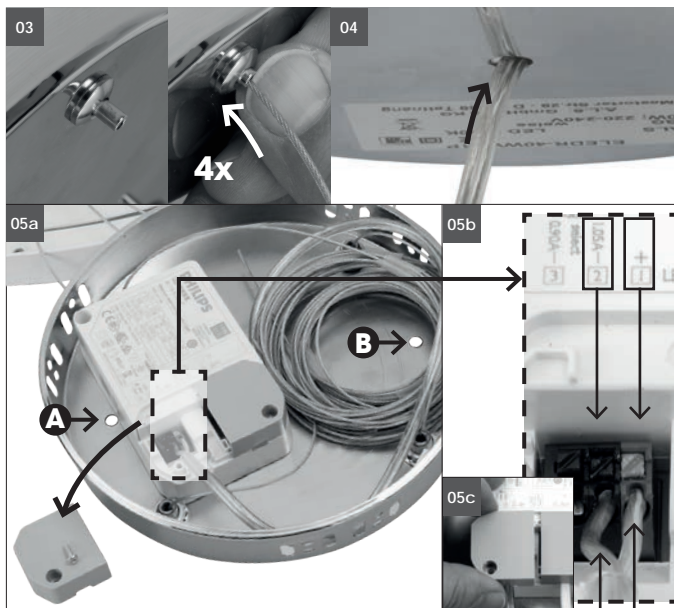
Carefully remove the LED panel from its packaging. Take off the ceiling suspension bracket from canopy and transfer the drill holes to the installation site. Please note the underlying installations during drilling!



Turn Off power supply before starting any installation. Do not connect the device under power. Connect the supply cables according to the electrical regulations to the primary connection 230V AC to LED converter.

Connect clear cable from LED lamp (see figure 05b) to secondary output LED converter. White marked cable to + and neutral cable to -. Clamp connection by pressing the head of terminal clamp. Check that all electrical cables and connections are firmly seated and correctly positioned. Close the terminal cover.

Only use the supplied LED converter! Other converters or transformers may destroy the light.



LED converter in the canopy. Drill holes **A** and **B** for ceiling mounting must remain uncovered!



It is not allowed to cover the converter with heat-insulating cover sheet or similar materials!

Additional drillings in the LED luminaire are not allowed!

Do not place any object on the LED pendant luminaire.

Do not place the LED converter on the LED pendant luminaire to avoid unnecessary transfer of heat.

Another installation / assembly / materials / types than provided in the manual sheets, release us from any electrotechnical and electrostatic responsibility.

Installation:

After mounting the ceiling suspension insert the 4 steel cables from the lamp into the pre-assembled cable reel (see figure 03). Adjust the pendulum length by pressing the wire pin. Set the altitude value and horizontal line. After installation check tightness of the lamp!

Fixing materials:

The warranty is void if the buyer or a third party repairs or modifies the luminaire.

