

## DESCRIPTION OF PARTS

LED panel recessed luminaire, UGR <19  
Housing metal, painted white, RAL 9003

Optional  
Mounting frame 625x625x51 mm, order number: ELEDN-AUR626  
Mounting kit, order number: Z-ELDN

Ceiling mounting kit for ceiling cutout, order number: Z-BELEDQ

## TECHNICAL DATA

LED luminaires with integrated converter  
220-240V - 50/60 Hz  
Total power consumption: 32 W  
Light color: ELEDQ-32NW11T = 4000K  
ELEDQ-32WW11T = 3000K

IP class 40  
Protection class: II  
Dimension: L620xW620xH45 mm  
EEC/A+

## LAMP

Light module replaceable (in case of repair on request).  
LED elements in the light module can not be replaced.

## LED DRIVER

Primary voltage: 220-240V - ( 50/60 Hz )



Protection class II



Notification of Risks



CE label



Safety Instructions



Splashproof (only in covered areas)



Cleaning Instructions



The product may not be disposed of in the household garbage.



It is not allowed to cover luminaires with heatinsulating cover sheet or similar materials!



The LED light is not dimmable with phase and section dimmer



Installation may only be carried out by qualified personnel.

## SAFETY



READ THE INSTRUCTIONS BEFORE USING THIS PRODUCT.  
KEEP THE SAFETY AND OPERATING INSTRUCTIONS FOR FUTURE USE.

## SAFETY INFORMATION

IP40

- Splashproof (only in covered areas).
- The luminaire is suitable for mounting only on load-bearing grid ceilings L620xW620 mm and surfaces. The light may otherwise fall. This can result in product damage and / or injuries.



- Don't install under power.
- Follow the instruction manual for installation.
- Installation only by qualified and authorised persons.
- Do not use the product when it has been damaged (defective covers) or there are operational faults such as flickering, smoking, steaming, crackling noises or the smell of smoke.
- A damaged or defective product must be changed or repaired by the manufacturer, a service person or a comparable qualified person.
- Installation only under observance of the valid guidelines specific to application and country among others VDE 0.100.
- Never open one of the electrical operating agents or plug any objects into them. Such procedures signify a danger to life through electrical shock.
- Absolutely avoid contact between the product and water or other liquids. For reasons of electrical safety, the light may not be placed in contact with water or other liquids or submerged in water.
- The product may not be changed or modified.
- Make sure that the luminair is never covered by heat insulating mats or thin materials. Make sure that the product has enough space for heat dissipation.



## MAINTENANCE AND CLEANING

The LED light agent cannot be replaced.



- Do not use solvents, such as benzene and similar agents. The light would be damaged thereby.
- Only use a dry, lint-free cloth for cleaning the product.

## DISPOSAL



The packaging consists of environmentally friendly materials. Dispose of them in the local recycling containers.



Do not dispose of this product in the household garbage when it has reached the end of its lifecycle, but rather take it to a disposal center. Your local officials will provide you with information about collection offices and their business hours.

## ELEDQ

Recessed ceiling luminaire / Ceiling luminaire

ELEDQ-32NW11T  
ELEDQ-32WW11T



White



## INTENDED USAGE

This product will only serve the purpose of illumination.

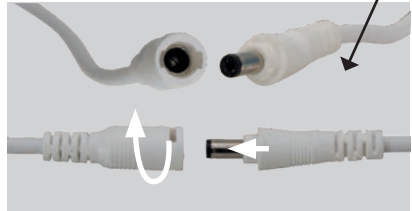
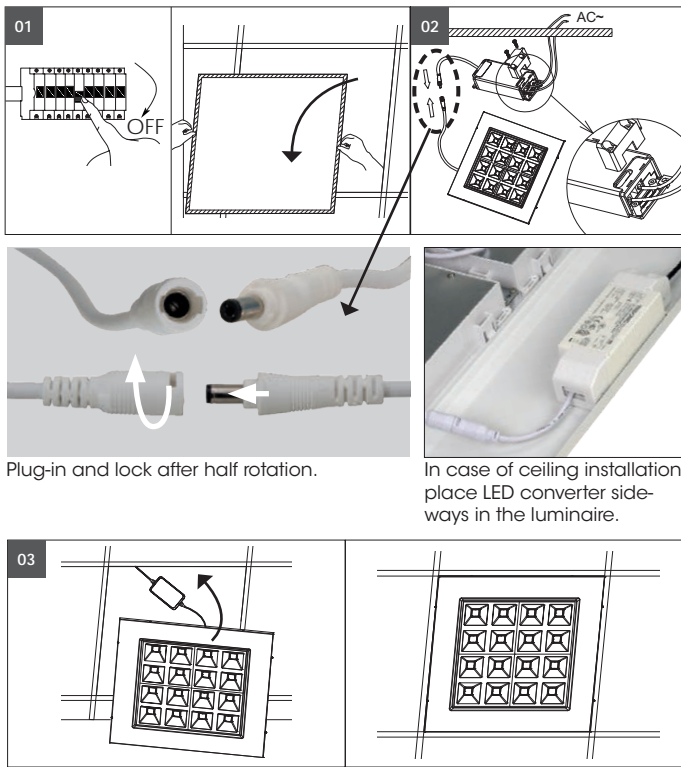
Splashproof (only in covered areas).

## SCOPE OF DELIVERY

- 1 x LED luminaire
- 1 x LED converter
- 1 x Set of instructions for assembly, operation and safety

address | contact

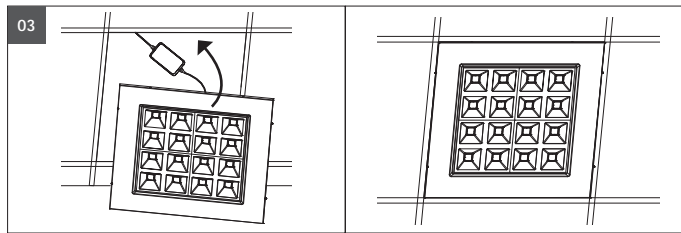
A.L.S. GmbH  
Mastorter Str. 31 | 88069 Tettnang (Germany)  
Tel.: +49 (0) 75 42 93 44-0 | Fax.: +49 (0) 75 42 93 44-30  
E-Mail: info@als.de | Web: www.als.de



Plug-in and lock after half rotation.



In case of ceiling installation place LED converter sideways in the luminaire.



Please check that the lamp has an electronic ballast with connection for functional earth. If so, please connect the functional earth according to the valid standards and guidelines!

Assembly instructions for LED panel

Carefully remove the LED panel from its packaging.

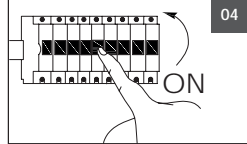
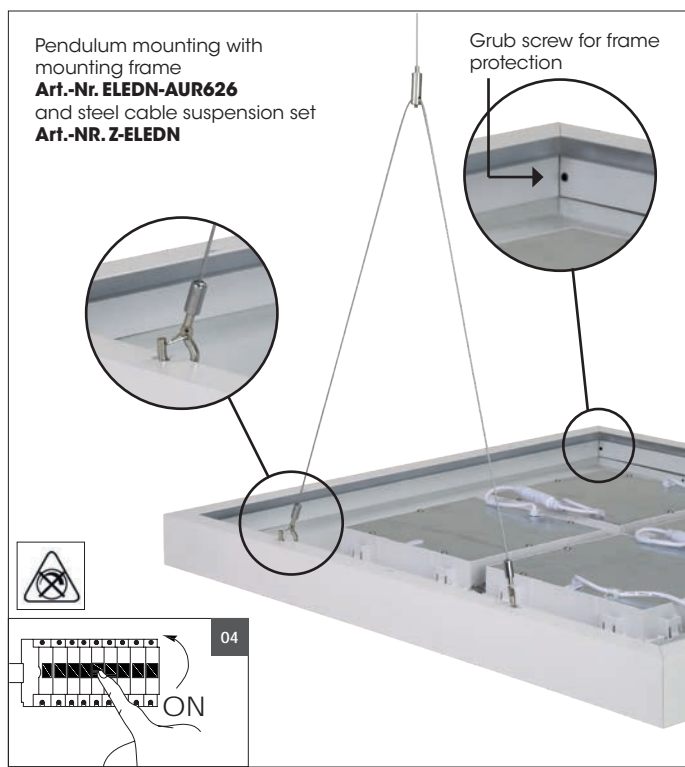


**01** Turn Off power supply before starting any installation. Do not connect the device under power. Connect the supply cables according to the electrical regulations to the primary connection 230V AC to LED converter.

**02** The electrical connection from LED panel to the converter is connected with a plug-in connector. Do not unplug before switching on, also not during operating the lamp.

Only use the supplied LED converter! Other converters or transformers may destroy the light.

**03** Over the corner edge of the light carefully put it into the ceiling section.



Avoid mechanical tensions on panel, the light should have some space.

**04** After installation and connection, switch on the mains voltage all-pole. Switch on the associated circuit breaker or turn the fuse on.

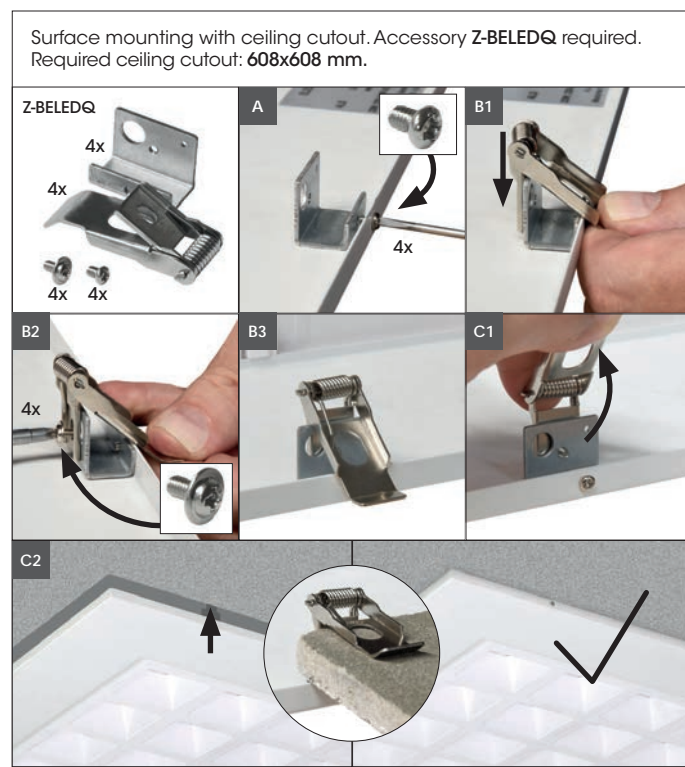


It is not allowed to cover LED panel and LED converter with heatinsulating cover sheet or similar materials! Additional drillings in the LED luminaire are not allowed! Do not place the LED converter on the LED pendant luminaire to avoid unnecessary transfer of heat.

Another installation / assembly / materials / types than provided in the manual sheets, release us from any electrotechnical and electrostatic responsibility.

**Fixing materials:**

The warranty is void if the buyer or a third party repairs or modifies the luminaire.



Surface mounting with ceiling cutout. Accessory Z-BELEDQ required. Required ceiling cutout: 608x608 mm.

