

## DESCRIPTION OF PARTS

LED panel 620 x 620 x 8,8 mm recessed ceiling luminaire UGR <19  
Painted aluminium frame RAL 9003  
Seamless corner, no light leak  
Operating range (\* remote control RF-2,4G) in closed rooms max. maximum reach of 20 m.  
Each light can be linked with up to 5 remote controls.  
The operating range depends on structural factors, like metal walls, iron reinforcement in walls and ceilings.  
For other functions of the remote control see manual Z-FBELEDN.

Optional mounting frame  
Order number: ELEDN-AUR626

## TECHNICAL DATA

LED incl. driver  
220-240V~ 50/60 Hz  
Total power consumption: 40,5 W  
Dimmable (only with remote control RF-2,4G, accessory: Z-FBELEDN, not included, has to be ordered separately)  
Light color: Tunable White 3000-6000K. **fully adjustable only by remote control (accessory: Z-FBELEDN, not included, has to be ordered separately)**  
IP class 20  
Protection class: II  
Flickerfree  
EEC/A+

## LAMP

LED  
Mitsubishi prismatic cover with PMMA reflector  
Lamp cannot be replaced.

## LED DRIVER

nominal voltage,  
primary: 220-240V~ ( 50/60 Hz )  
950 mA



Protection class II



Notification of Risks



CE label



Safety Instructions



The product is only for use in interiors.



Cleaning Instructions



The product may not be disposed of in the household garbage.



It is not allowed to cover luminaires with heatinsulating cover sheet or similar materials!

## SAFETY



READ THE INSTRUCTIONS BEFORE USING THIS PRODUCT.  
KEEP THE SAFETY AND OPERATING INSTRUCTIONS FOR FUTURE USE.

## SAFETY INFORMATION



- The light is only suitable for use in interiors, in dry, enclosed rooms.
- The light is not suitable for attaching on uneven surface. The light may otherwise fall. This can result in product damage and / or injuries.



- Don't install under power.
- Follow the instruction manual for installation.
- Installation only by qualified and authorised persons.
- Do not use the product when it has been damaged (defective covers) or there are operational faults such as flickering, smoking, steaming, crackling noises or the smell of smoke.
- A damaged or defective product must be changed or repaired by the manufacturer, a service person or a comparable qualified person.
- Installation only under observance of the valid guidelines specific to application and country among others VDE 0.100.
- Never open one of the electrical operating agents or plug any objects into them. Such procedures signify a danger to life through electrical shock.
- Absolutely avoid contact between the product and water or other liquids. For reasons of electrical safety, the light may not be placed in contact with water or other liquids or submerged in water.
- The product may not be changed or modified.

## MAINTENANCE AND CLEANING

The LED light agent cannot be replaced.



- Do not use solvents, such as benzene and similar agents. The light would be damaged thereby.
- Only use a dry, lint-free cloth for cleaning the product.

## DISPOSAL

The packaging consists of environmentally friendly materials. Dispose of them in the local recycling containers.



Do not dispose of this product in the household garbage when it has reached the end of its lifecycle, but rather take it to a disposal center. Your local officials will provide you with information about collection offices and their business hours.

## ELEDN Tunable White

Mounted luminaire/Recessed ceiling luminaire  
ELEDN-40WW/SCW11



White



## INTENDED USAGE

This product will only serve the purpose of illumination.

The light is only suitable for use in interiors, in dry, enclosed rooms.

## SCOPE OF DELIVERY

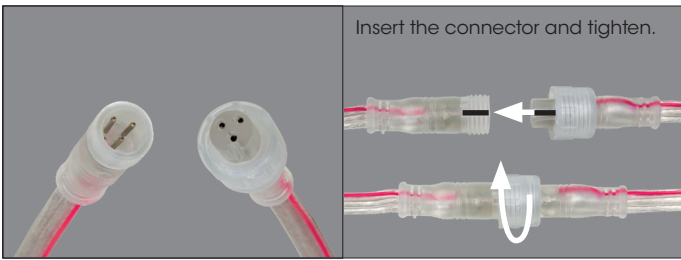
1 x LED light  
1 x converter with LED plug-connection.  
1 x set of instructions for assembly, operation and safety

## \*REQUIRED ACCESSORIES

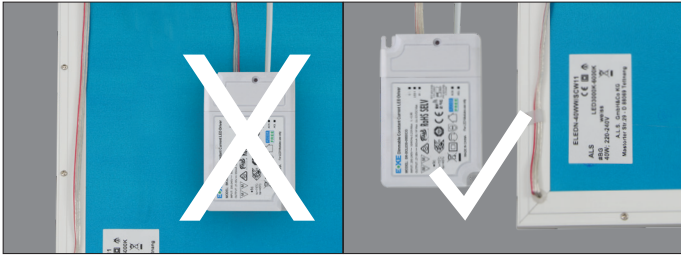
1 x Remote control, order-no.: Z-FBELEDN

address | contact

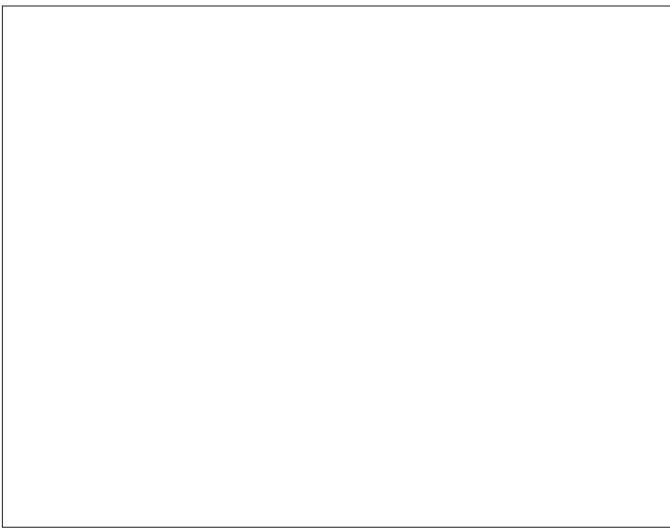
A.L.S. GmbH & Co. KG  
Mastorter Str. 31 | 88069 Tettnang (Germany)  
Tel.: +49 (0) 75 42 93 44-0 | Fax.: +49 (0) 75 42 93 44-30  
E-Mail: info@als.de | Web: www.als.de



Insert the connector and tighten.



In case of ceiling installation place LED converter **sideways** to the light.



#### Assembly instructions for LED panel

Carefully remove the LED panel from its packaging.  
Over the corner edge of the light carefully put it into the ceiling section.  
Avoid mechanical tensions on panel, the light should have some space.



Turn Off power supply before starting any installation.  
Do not connect the device under power.  
Connect the supply cables according to the electrical regulations to the primary connection 230V AC to LED converter.

The electrical connection from LED panel to the converter is connected with a plug-in connector. **Do not unplug** before switching on, also not during operating the lamp.

Only use the supplied LED converter! Other converters or transformers may destroy the light.



**It is not allowed to cover LED panel and LED converter with heatinsulating cover sheet or similar materials!**

Additional drillings in the LED luminaire are not allowed!  
Do not place the LED converter on the LED pendant luminaire to avoid unnecessary transfer of heat.

Another installation / assembly / materials / types than provided in the manual sheets, release us from any electrotechnical and electrostatic responsibility.

#### Fixing materials:

Pendant mounting order number: Z-ELEDN  
Assembly frame order number: ELED2-AUR42  
The warranty is void if the buyer or a third party repairs or modifies the luminaire.

**For further information please check out remote control manual Z-FBELEDN.**