

## DESCRIPTION OF PARTS

LED ceiling and wall surface-mounted luminaire, angular.  
Switchable between 3000K, 4000K, 6000K with integrated power supply. Can be adjusted with the HF sensor by remote control (order no. BLX-FBS)

## TECHNICAL DATA

|               | Electrical power<br>230V AC | Dimension  | Beam angle |
|---------------|-----------------------------|------------|------------|
| BLR-12WWSCW1S | 12W                         | Ø220x48 mm | 120°       |
| BLR-18WWSCW1S | 18W                         | Ø280x48 mm | 120°       |
| BLR-25WWSCW1S | 25W                         | Ø330x48 mm | 120°       |

non-dimmable  
protection class II  
Front cover impact resistance: IK10

## LAMP

LED

## SAFETY



READ THE INSTRUCTIONS BEFORE USING THIS PRODUCT.  
KEEP THE SAFETY AND OPERATING INSTRUCTIONS FOR FUTURE USE.

## SAFETY INFORMATION

IP54



- The light is only suitable for use indoors or in roofed outdoor areas.
- The light is not suitable for attaching on uneven surface. The light may otherwise fall. This can result in product damage and / or injuries.
- Don't install under power.
- Follow the instruction manual for installation.
- Installation only by qualified and authorised persons.
- Do not use the product when it has been damaged (defective covers) or there are operational faults such as flickering, smoking, steaming, crackling noises or the smell of smoke.
- A damaged or defective product must be changed or repaired by the manufacturer, a service person or a comparable qualified person.
- Installation only under observance of the valid guidelines specific to application and country among others VDE 0.100.
- Never open one of the electrical operating agents or plug any objects into them. Such procedures signify a danger to life through electrical shock.
- Absolutely avoid contact between the product and water or other liquids. For reasons of electrical safety, the light may not be placed in contact with water or other liquids or submerged in water.
- The product may not be changed or modified.

## MAINTENANCE AND CLEANING



- The LED light agent cannot be replaced.
- Do not use solvents, such as benzene and similar agents. The light would be damaged thereby.
- Only use a dry, lint-free cloth for cleaning the product.

## DISPOSAL

The packaging consists of environmentally friendly materials.  
Dispose of them in the local recycling containers.



Do not dispose of this product in the household garbage when it has reached the end of its lifecycle, but rather take it to a disposal center. Your local officials will provide you with information about collection offices and their business hours.

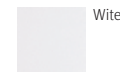
## BLR Sensor

Wall and ceiling-mounted luminaire

BLR-12WWSCW1S  
BLR-18WWSCW1S  
BLR-25WWSCW1S



Not included in delivery:  
**Required accessory**  
remote control  
**Art.-No.: BLX-FBS**



Wite



## INTENDED USAGE

This product will only serve the purpose of illumination.

The light is only suitable for use indoors or in roofed outdoor areas.

## SCOPE OF DELIVERY

1 x LED luminaire  
1 x set of instructions for assembly, operation and safety  
1 x mounting kit

**Not included in delivery:**  
Remote control order no. **BLX-FBS**

address | contact

A.L.S. GmbH  
Mastorter Str. 31 | 88069 Tettnang (Germany)  
Tel.: +49 (0) 75 42 93 44-0 | Fax.: +49 (0) 75 42 93 44-30  
E-Mail: info@als.de | Web: www.als.de



Protection class II



CE label



The light is only suitable for use indoors or in roofed outdoor areas.



The product may not be disposed of in the household garbage.



Notification of Risks



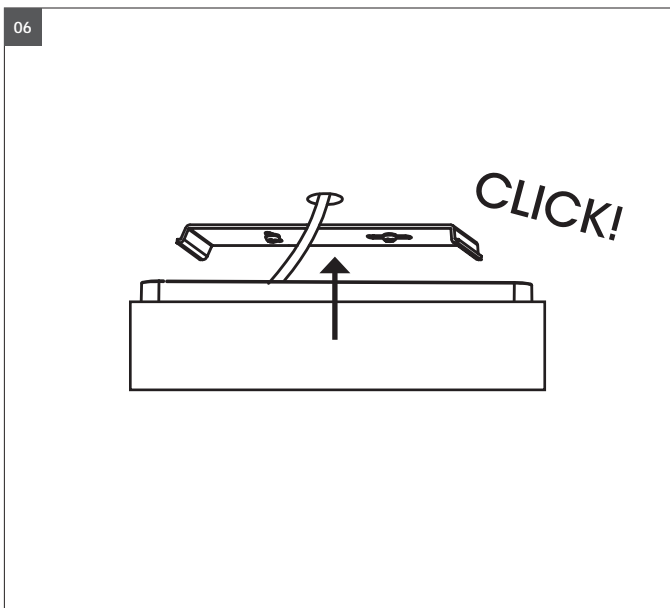
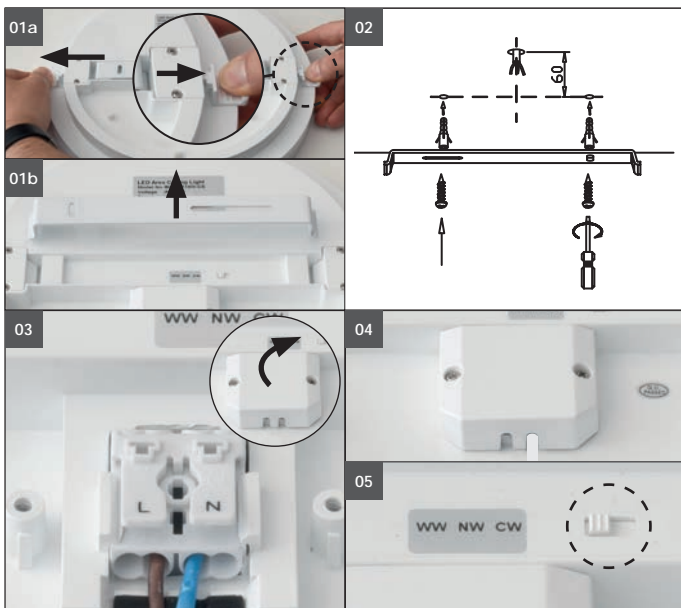
Safety Instructions



Cleaning Instructions



LED luminaire is not dimmable



## Assembly instructions



**Turn Off power supply before starting any installation!**  
**Do not connect the device under power!**

Carefully remove the LED luminaire from its packaging.

**Bild 01a:** Release the mounting bracket with the side release on the left and right of the luminaire.

**Bild 01b:** Remove mounting bracket.

**Bild 02:** Transfer the mounting holes on ceiling/wall with mounting bracket. Check for underlying installations before drilling. Mounting the bracket with the enclosed accessory. Note that the mounting bracket is not bent when tightening the screws!

**Bild 03:** Remove cover of the connecting terminal and attach the power supply cable to the primary 230V terminal in accordance with the electrical codes.

**Bild 04:** Fix back cover of connecting terminal.

**Bild 05:** Set the desired light color with the switch.

**WW** = 3000K  
**NW** = 4000K  
**CW** = 6000K

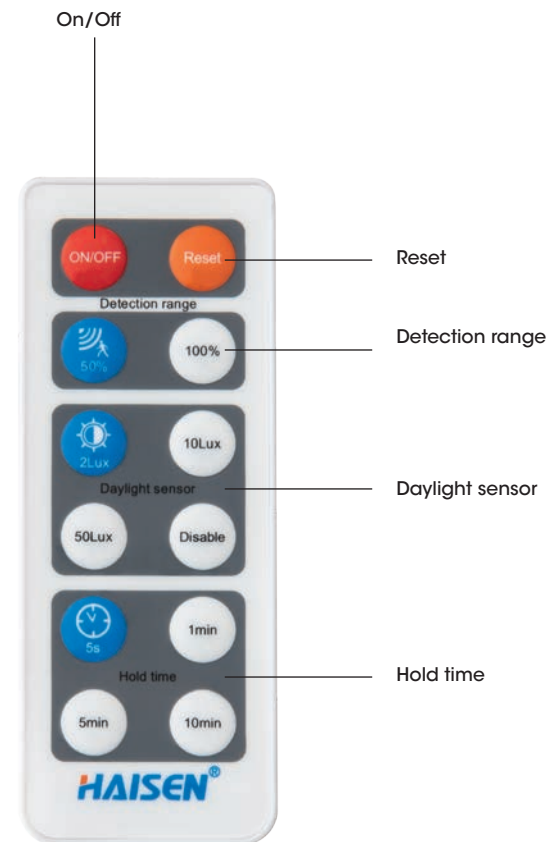
**Bild 06:** Put the LED luminaire on the mounting bracket. Press the lamp onto the mounting bracket until you hear it click into place.

**Carefully check the solidity of the LED luminaire.**  
Turn on the power.

## Fixing materials

- Dowel
- Screws

**Necessary  
accessory**  
Remote  
control  
BLX-FBS



Version with sensor: The basic configuration is set with the infrared remote control.

Point the remote control towards the luminaire, select the configuration by pressing the button with the symbols. The luminaire confirms with a short on-off that the function has been taken over.

With luminaires of the same type, the configuration can be done with a remote control.