

## DESCRIPTION OF PARTS

LED Ceiling light cylindrical, integrated power supply  
Dimmable (TRIAC)

## TECHNICAL DATA

Power supply: 220 - 240V  
Wattage: max. approx. 4W

AMOS-7NW1TD = 4000K

**Light source:** CREE LED, inc. CXA1304-0000-000ggHnn40F  
This luminaire contains one light source of energy efficiency class E

AMOS-7WW1TD = 3000K

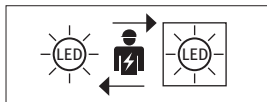
**Light source:** CREE LED, inc. CXA1304-0000-000ggYnn30F  
This luminaire contains one light source of energy efficiency class F

Protection class: I  
Protection type: IP20  
Installation: Ceiling mounted

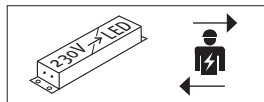
Beam angle: 36°  
CRI: >80

Dimensions: Ø64 mm, H100 mm

The product consists of two components. Luminaire with light source and external LED Driver.



The light source is only exchangeable by a professional.



The LED driver is only exchangeable by a professional.



Protection class I



Notification of Risks



CE label



Safety Instructions



The light can be used in interiors.



Cleaning Instructions



The product may not be disposed of in the household garbage.



It is not allowed to cover luminaires with heatinsulating cover sheet or similar materials!



Dimmable (TRIAC)



Don't look directly into the LED! The LED is that bright that it might damage your eyes!

## DISPOSAL

The packaging consists of environmentally friendly materials. Dispose of them in the local recycling containers.



Do not dispose of this product in the household garbage when it has reached the end of its lifecycle, but rather take it to a disposal center. Your local officials will provide you with information about collection offices and their business hours.

## SAFETY



READ THE INSTRUCTIONS BEFORE USING THIS PRODUCT. KEEP THE SAFETY AND OPERATING INSTRUCTIONS FOR FUTURE USE.

The warranty claim and guarantee is rendered invalid in the event of damage to the product, which is caused by not following the operating instructions. We are not liable for the consequent damage. Because of specific characteristics of LED's (life, deviation in colour etc.) we formulated special terms for planing and installing our LED products. They are part of these installation manual! Should they not be available, request them please! Don't look directly into the LED! The LED is that bright that it might damage your eyes!

## SAFETY INFORMATION



- The light is suitable for lighting purpose indoors
- The LED light is provided for load-bearing and suspended ceiling with ceiling cut-out according to data sheet. Sizes see technical data.



- Don't install under power.
- Follow the instruction manual for installation.
- Installation only by qualified and authorised persons.
- Do not use the product when it has been damaged (defective covers) or there are operational faults such as flickering, smoking, steaming, crackling noises or the smell of smoke.
- A damaged or defective product must be changed or repaired by the manufacturer, a service person or a comparable qualified person.
- Installation only under observance of the valid guidelines specific to application and country among others VDE 0.100.
- Never open one of the electrical operating agents or plug any objects into them. Such procedures signify a danger to life through electrical shock.
- Absolutely avoid contact between the product and water or other liquids. For reasons of electrical safety, the light may not be placed in contact with water or other liquids or submerged in water.
- The product may not be changed or modified.
- Don't look directly into the LED! The LED is that bright that it might damage your eyes!



## MAINTENANCE AND CLEANING

The light source is only exchangeable by a professional.



- Do not use solvents, such as benzene and similar agents. The light would be damaged thereby.
- Only use a dry, lint-free cloth for cleaning the product.

# AMOS

LED Ceiling light

AMOS-7NW1TD  
AMOS-7WW1TD

**ALS**  
ARCHITEKTONISCHE  
LICHT  
SYSTEME



White



## INTENDED USAGE

This product will only serve the purpose of illumination.

## SCOPE OF DELIVERY

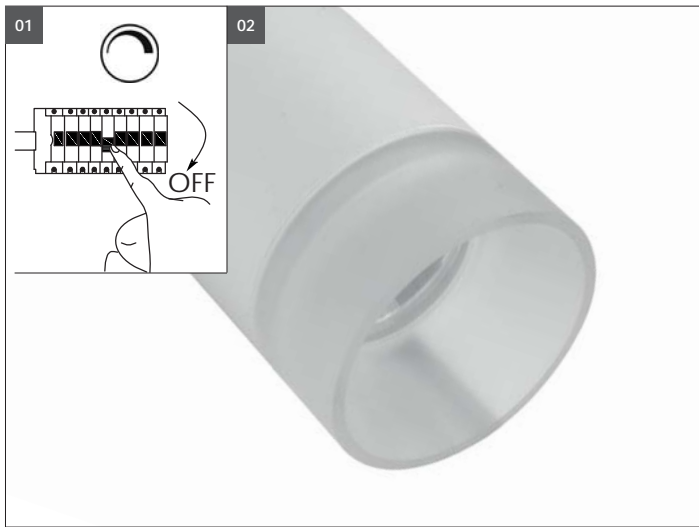
1 x LED ceiling light  
1 x set of instructions for assembly, operation and safety

address | contact

A.L.S. GmbH  
Mastorter Str. 31 | 88069 Tettnang (Germany)  
Tel.: +49 (0) 75 42 93 44-0 | Fax.: +49 (0) 75 42 93 44-30  
E-Mail: info@als.de | Web: www.als.de

Version: 2021-12-20

EN

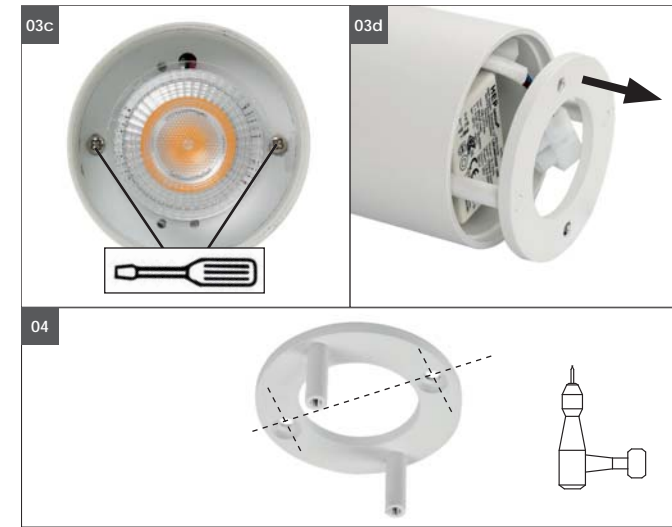


**01** Switch off before installation. Switch on only after complete installation and examination of the circuit. Professional electrician for installation and maintenance only. Turn Off power supply before starting any installation. Read instructions & check you have all the tools & accessories to complete the installation correctly. Open a hole according to the cutout size of led downlight.  
**02** Carefully remove the luminaire from its packaging. Check for damage and complete delivery.

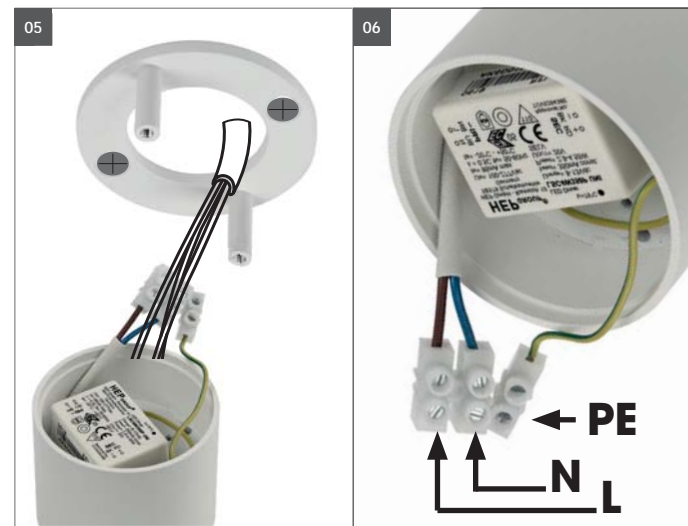


**Fixing materials:** cable relief, clamps  
 The warranty is void if the buyer or a third party repairs or modifies the luminaire

**03a** Detach lens from housing.  
**03b** Remove lens.



**03c** Dissolve completely 2x Phillips screw.  
**03d** Remove the fixing ring.  
**04** The connection cable must be offset from the center for later connection (see Fig 05). Please observe when positioning the luminaire! Transfer the drilling positions of the mounting ring to the ceiling and drill holes in the ceiling. **Check for underlying installations before drilling!**



**05** Fasten the mounting ring and ensure that it is firmly seated. Guide the connection cable offset from the center into the free space next to the LED driver.  
**06** Connect the supply cable to the L, N, PE cable connection terminals of the luminaire in accordance with the electrical DIN VDE 0100 regulations. Place the connection terminals back into the housing.



**07a** Slide the housing onto the mounting ring.  
**07b** Tighten 2x Phillips screw on both sides. Check luminaire for tight fit.  
**07c** Place lens straight on thread and screw on. **Do not tilt!**



Additional drillings in the LED luminaire are not allowed!



Looking into the light exit for too long can damage your eyes!

**08** After installation and connection, switch on all poles of the mains voltage. To do this, switch on the associated circuit breaker or turn on the fuse. Also switch on the associated residual current circuit breaker so that all poles of the mains supply line are connected to the mains voltage.

Another installation / assembly / materials / types than provided in the manual sheets, release us from any electrotechnical and electrostatic responsibility.